

DEPARTMENT OF THE ARMY TECHNICAL MANUAL

---

FIELD AND DEPOT MAINTENANCE  
REPAIR PARTS AND SPECIAL TOOL LISTS

INDICATOR, OUTLET VALVE LEAKAGE,  
M4A1  
(FSN 6665-738-2128)  
(END ITEM CODE 667)

---

HEADQUARTERS, DEPARTMENT OF THE ARMY

FEBRUARY 1964

TECHNICAL MANUAL }  
 No. 3-6665-209-35P }

HEADQUARTERS  
 DEPARTMENT OF THE ARMY  
 WASHINGTON D.C., 14 February 1964

**FIELD AND DEPOT MAINTENANCE  
 REPAIR PARTS AND SPECIAL TOOL LISTS**

**INDICATOR, OUTLET VALVE LEAKAGE, M4A1  
 (FSN 6665-738-2128)**

SECTION		Paragraph	Page
I.	INTRODUCTION		
	Purpose and scope -----	1	ii
	Explanation of columns -----	2	ii
	Abbreviations -----	3	iv
	Suggestions and recommendations -----	4	iv
II.	FUNCTIONAL PARTS LIST		
GROUP 100	Chassis -----		1
200	Cabinet -----		26
300	Cover -----		28
400	Probe -----		31
500	Accessory equipment -----		35
600	Bulk material -----		36
III.	INDEXES		
	Alphabetical index -----		38
	Federal stock number index -----		53

## SECTION I

## INTRODUCTION

**1. Purpose and Scope**

This manual provides a list of repair parts for the M4A1 Outlet Valve Leakage Indicator. It is to be used by maintenance and supply personnel as a requisitioning reference document. It contains within appropriate functional groups, those repair parts authorized for applicable maintenance echelons. Appropriate allowance factors to be used in computing allowance quantities are included.

**2. Explanation of Columns**

*a. Index Number.* A number is assigned to each repair part to facilitate indexing and referencing. The numbers are identical to those assigned to the same assembly, subassembly, and repair parts in TM 3-6665-20920P.

*b. S, M, R Code.* Source, maintenance, and recoverability codes are assigned in accordance with AR 700-18 as follows:

- (1) *Source.* The source code consists of a number which identifies the technical service having supply responsibility for the repair part, and a code symbol which indicates the source from which the repair part may be obtained.

(a) Technical services having supply responsibility are identified by the following numbers which constitute the first element of the source code:

- 3 — Chemical Corps
- 5 — Corps of Engineers
- 8 — Medical Service Corps
- 9 — Ordnance Corps
- 10 — Quartermaster Corps
- 11 — Signal Corps
- 55 — Transportation Corps

(b) Code symbols indicating the source of repair parts are the second element of the source code, and are as follows:

1. Code "P" - Repair parts which are high mortality parts; procured by technical s e r v i c e s,

stocked in and supplied from the technical service depot system, and authorized for use at indicated maintenance echelons.

2. Code "P1" — Repair parts which are low mortality parts; procured by technical services, stocked only in and supplied from technical service key depots, and authorized for installation at indicated maintenance echelons.
3. Code "M" — Repair parts which are not procured or stocked but are to be manufactured at indicated maintenance echelons.
4. Code "X2" — Repair parts which are not stocked. The indicated maintenance echelon requiring such repair parts will attempt to obtain them through cannibalization; if not obtainable through cannibalization, such repair parts will be requisitioned with supporting justification through normal supply channels.

(2) *Maintenance Code.* The maintenance code consists of a single letter denoting the lowest echelon of maintenance authorized to install or manufacture the repair parts as follows:

O—Organizational Maintenance  
(1st and 2nd echelons)  
Maintenance echelons are  
defined in AR 750-5.

F—Field Maintenance (3d echelon).

H—Field Maintenance (4th echelon).

D—Depot Maintenance (5th echelon).

(3) *Recoverability Code.* The recoverability code consists of a single letter which indicates that the responsible technical service desires the return of unserviceable repair parts for recovery or salvage. When no code is indicated in the recoverability column the part will be considered

expendable. The following code will be used:

R—Repair parts and assemblies which are economically repairable at field maintenance activities (3d and 4th echelon) and are normally furnished by supply on an exchange basis.

c. *Federal Stock Number.* Federal stock numbers are assigned by the Federal Cataloging Program and are to be used in accordance with AR 708-15.

d. *Description.* The approved Federal item name appears in upper case (capital) letters. Modifiers necessary for proper identification appear in lower case (small) letters.

e. *Unit of Issue.* The unit of issue for each item listed is indicated in this column.

f. *Expendability.* The symbol NX indicates that an item is nonexpendable. When no symbol appears, the item is expendable.

g. *Quantity per Unit.* The quantity listed in this column is the quantity of the repair part used in the group, section, assembly, or subassembly indicated. If a repair part has more than one application, the quantity per unit becomes the total quantity per equipment and is indicated only in the initial appearance of the part. This column remains blank in all subsequent appearances of the repair part. Unless otherwise indicated, the unit of measure applicable to the quantity per unit is the same as the unit of issue.

*h. Allowances.*

(1) The numbers listed in the third and fourth echelon columns are allowance factors which are to be used in computing authorized allowance for 15 days maintenance of 100 equipments.

(2) To compute an authorized quantity for 3rd and 4th echelon, multiply the number of equipments supported by the allowance factor and divide this product by 100. The result, rounded to the nearest whole number, is the authorized quantity. Examples are as follows:

A. Quantity of equipment supported 50

Allowance factor 1.7 per 100

$$\begin{array}{r} \text{Authorized quantity} \\ 50 \times 1.7 \\ \hline 100 \end{array} = .85$$

This quantity is greater than 0.5 and less than 1.0. Therefore, the authorized quantity is 1.

B. Quantity of equipment supported 103

Allowance factor 4.1 per 100

$$\begin{array}{r} \text{Authorized quantity} \\ 103 \times 4.1 \\ \hline 100 \end{array} = 4.223$$

The decimal portion is less than 0.5. Therefore, the authorized quantity is 4.

(3) Allowance numbers in the fifth echelon column represent quantities recommended for the overhaul of 100 major components and/or end items.

(4) An asterisk appearing in an allowance column indicates that the item may be requisitioned for immediate usage by the echelon indicated.

(5) The allowance factors for a repair part with more than one application are indicated only in the initial appearance of the part.

(6) When supply records are established by field maintenance echelons, demand experience is to be used to compute stockage objectives on repair parts included in this initial guide quantity list for a period of time prescribed by the major commander within the limitations of AR 710-25. Repair parts allocated to each of these echelons, but not included in the initial stockage, may be added to stocks when demand experience justifies a stockage objective of at least one.

*i. Maintenance Echelons.*

(1) Maintenance echelons are defined in AR 750-5. The mission of field maintenance organizations in the continental United States are assigned in AR 750-7. The missions of

depot maintenance organizations in the continental United States are assigned in AR 780-370. The missions of field and depot maintenance organizations in oversea commands are assigned by the theatre commander.

*i. Illustrations.* This column contains the figure number of each illustration and the item number of that illustration for indicated repair parts.

**3. Abbreviations.**

The abbreviations used herein are defined as follows:

- AC-----alternating current
- alw-----allowances
- amp-----ampere (s)
- AR-----as required
- AWG -----American wire gauge
- bg -----bag
- C-----centigrade
- cad -----cadmium
- cn-----can
- cy-----cycle
- deg -----degree
- DC-----direct current
- dia -----diameter(s)
- DPDT-----double pole-double throw
- dwg -----drawing
- ea-----each
- ech-----echelon
- equip-----equipment
- ft -----foot, feet
- hd -----head
- h -----high, height
- in.-----inch (es)
- id -----inside diameter(s)
- lb-----pound (s)
- lg -----length, long
- max -----maximum
- med-----medium
- meg -----megohm (s)
- MFD -----microfarad (s)
- min -----minimum
- mtd -----mounted
- mtg-----mounting
- NC-----American National Coarse  
Thread
- NF-----American National Fine  
Thread

- No.-----number
- nom, -----nominal
- NPT -----American Standard Taper  
Pipe Thread
- NX -----nonexpendable
- O/A -----overall
- od -----outside diameter(s)
- pkg -----package
- pltd -----plated
- porm -----plus or minus
- pr -----pair
- pt -----pint(s)
- rd -----round
- rh -----right hand
- SPST-----single pole - single throw
- temp-----temperature
- thd -----thread(s) (ed)
- thk -----thick(ness)
- UP -----microfarad(s)
- UNC -----Unified Coarse Thread
- UNF -----Unified Fine Thread
- UUF -----micromicrofarad
- u/w -----used with
- v -----volt(s)
- w-----watt, wide, width
- w/ -----with
- w/o-----without

**4. Suggestions and Recommendations**

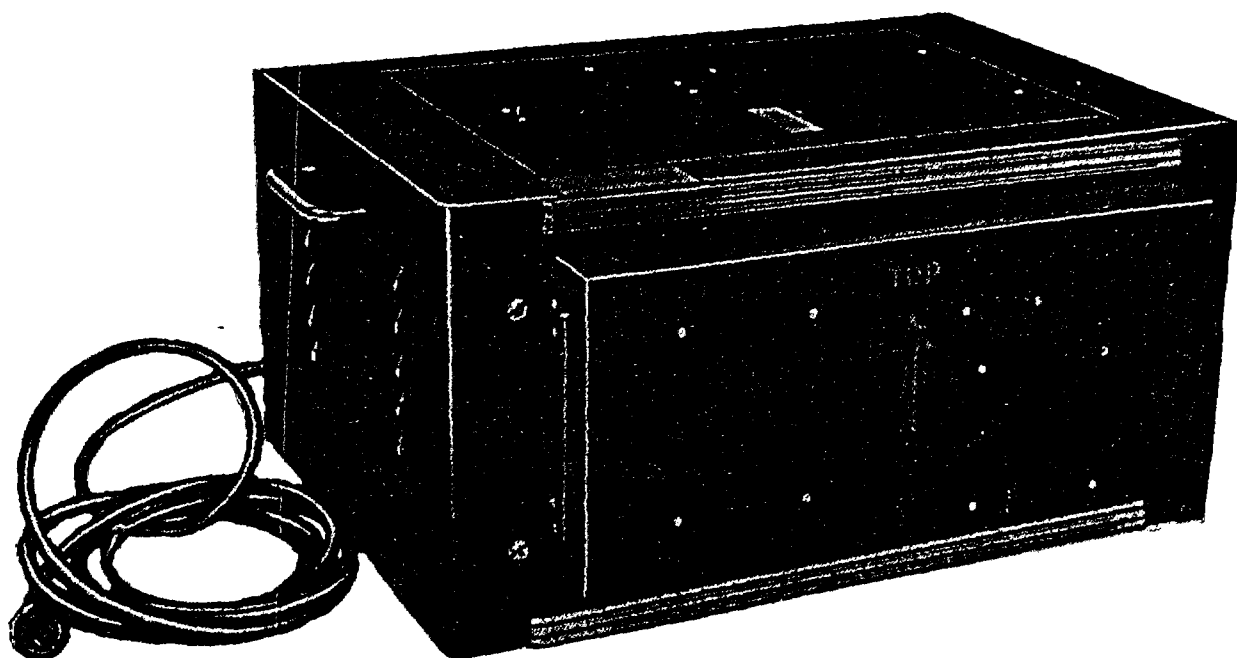
*a.* Notice of discrepancies and/or suggested changes are requested and encouraged. They should be forwarded through command channels on DA Form 2028 to the Commanding General, U.S. Army Edgewood Arsenal, ATTN: SMUEA-EIS-EM-ES, Edgewood Arsenal, Md. (21010).

*b.* Suggestions and recommendations for changes to repair parts allocations and allowance factors should include the following minimum data for each repair part concerned:

- (1) Stock number.
- (2) Nomenclature.
- (3) End item in which the part is incorporated.
- (4) Number of demands in 90 days.
- (5) Number of end items supported.
- (6) Recommended action and brief justification.

SECTION II. FUNCTIONAL PARTS LIST

INDEX NO.	S, M, R CODE					FEDERAL STOCK NUMBER	DESCRIPTION	UNIT OF ISSUE	EXPEND-ABILITY	QUANTITY PER UNIT	15 DAY MAINT ALW PER 100 EQUIP			ILLUS-TRATIONS	
	MATERIEL CODE NO.	SOURCE	MAINTENANCE LEVEL	RECOVER-ABILITY	3RD ECH						4th ECH	5th ECH	FIG. NO	ITEM NO.	
1						6665-738-2128	INDICATOR, OUTLET VALVE LEAKAGE, M4A1	ea	NX					1	
							GROUP 100 CHASSIS								
							Electrical Components Section								
2	3	P1	O	R		6665-779-5928	CHASSIS ASSEMBLY, ELECTRIC	ea		1	*	*	2	2,	3
3	11	P1	H			5910-984-2274	CAPACITOR, FIXED, MICA DIELECTRIC, .003 MFD, 500 v DC, 2 uninsulated wire lead type terminals	ea		1		*	10	3	11
4	11	P1	H			5910-811-5517	CAPACITOR, FIXED, PAPER DIELECTRIC, 1 section, 600 v DC, 2 UF porm 10%, metal case, 2 lug type terminals	ea		1		*	10	3	15
5	11	P	O			5960-228-3765	ELECTRON TUBE, glass envelope, triode amplifier	ea		1	(20)	(20)	100	2	11
6	10	P1	F			5325-801-3103	GROMMET, RUBBER, synthetic rubber, 1-1/2 in. od of flange, 1-1/4 in. od of groove, 3/32 in. thk flange, 1/2 in. dia hole, 1/4 in. h overall, 1/16 in. w groove	ea		5	*	*	*	3	1
7	9	P1	F			5310-014-4530	NUT, PLAIN, HEXAGON, steel, cad or zinc pltd, No. 6-32 NC-2B	ea		24	*	*	*	2	2
8	3	P1	H			5310-081-8087	NUT, SELF-LOCKING, HEXAGON, steel, cad pltd, No. 6-32 UNC-3B	ea		28		*	*	2 3	15 9
9	11	P1	H			5940-753-5151	PLATE, DESIGNATION, aluminum, white inscription, black background, No. 1 thru 16	ea		1		*	*	2	16
10	3	P1	H			5945-801-6529	RELAY, ARMATURE, 115 v, 4 terminals for contacts	ea		1		*	10	2	21
11	11	P1	H			5945-069-6545	RELAY, ARMATURE, 115 v, 6 terminals for contacts 2 terminals for coil, continuous duty, dustproof, 3300 OHM	ea		1		*	10	2	7



*Figure 1. M4A1 outlet valve leakage indicator, right front view.*

INDEX NO.	S, M, R CODE					FEDERAL STOCK NUMBER	DESCRIPTION	UNIT OF ISSUE	EXPEND-ABILITY	QUANTITY PER UNIT	15 DAY MAINT ALW PER 100 EQUIP			ILLUS-TRATIONS	
	MATERIEL CODE NO.	SOURCE	MAINTENANCE LEVEL	RECOVER-ABILITY	3RD ECH						4th ECH	5th ECH	FIG. NO	ITEM NO.	
12	11	P1	H		5905-815-4765	RESISTOR, FIXED, COMPOSITION, 1/2 w, rated at 70 deg C ambient temp, 2 wire lead type terminals	ea		1		*	10	3	12	
13	11	P1	H		5805-279-1754	RESISTOR, FIXED, COMPOSITION, 1.5 meg, 1/2 watt power, insulated, 2 wire lead type terminals	ea		1		*	10	3	14	
14	11	P1	H		5905-186-3008	RESISTOR, FIXED, COMPOSITION, 100 OHMS, 1/2 watt, 0.375 In. lg, 0.138 in. od, Insulated, 2 wire lead type terminals	ea		1		*	10	3	10	
15	3	P1	H		6665-811-4740	ROD, ALUMINUM	ea		2		*	*	2	12	
16	9	P1	F		5305-043-5885	SCREW, MACHINE, pan hd, slotted, steel, cad or zinc pltd, No. 6-32 UNC-2A, 5/16 In. lg	ea		10	*	*	*	2	4	
17	9	P1	F		5305-043-6666	SCREW, MACHINE, pan hd, slotted, steel, cad or zinc pltd, No. 6-32 UNC-2A, 5/8 in. lg	ea		15	*	*	*	2	18	
18	9	P1	F		5305-043-6671	SCREW, MACHINE, pan hd, slotted, steel, cad or zinc pltd, No. 6-32 UNC-2A, 1-1/2 in. lg	ea		4	*	*	*	2	20	
19	9	P1	H		5305-043-6690	SCREW, MACHINE, pan hd, slotted, steel, cad or zinc pltd, No. 8-32 UNC-2A, 3/16 in. lg	ea		2		*	*	3	2	
20	9	P1	H		5305-043-6695	SCREW, MACHINE, pan hd, slotted, steel, cad or zinc pltd, No. 8-32 UNC-2A, 1/2 in. lg	ea		2		*	*	2	13	
21	9	P1	F		5305-043-6700	SCREW, MACHINE, steel, cad or zinc pltd, No. 8-32 NC. 1-1/4 In. lg	ea		2	*	*	*	2	9	
22	3	P1	H		5935-232-3786	SOCKET, ELECTRON TUBE, octal, molded plastic, 4 solder tab type grounding lug terminals	ea		1		*	*	3	8	
23	3	P1	F		6665-778-9589	SPACER	ea		4	*	*	*	2	6	
24	3	P1	H		5930-063-7257	SWITCH, DPDT, 6 solder lug type terminals, bushing mtg, AC, 250 v max	ea		1		*	*	2	14	
													3	4	



INDEX NO.	S, M, R CODE					FEDERAL STOCK NUMBER	DESCRIPTION	UNIT OF ISSUE	EXPEND-ABILITY	QUANTITY PER UNIT	15 DAY MAINT ALW PER 100 EQUIP			ILLUS-TRATIONS	
	MATERIEL CODE NO.	SOURCE	MAINTENANCE LEVEL	RECOVER-ABILITY	3RD ECH						4th ECH	5th ECH	FIG. NO	ITEM NO.	
25	11	P1	H		5940-271-4622	TERMINAL BOARD, plastic, 1 terminal, solder lug type, 11/16 in. lg	ea		1		*	*	3	13	
26	3	P1	H		5940-083-6057	TERMINAL BOARD, plastic, 16 terminals, barrier type, 6-5/8 in. lg, 7/8 in. w, 13/32 in. h	ea		1		*	*	2	17	
27	11	P1	H		5940-682-2776	TERMINAL BOARD, plastic, 16 terminals, spade lug type, 6-5/8 in. lg, 1/2 in. w, 3/32 in. thk, terminal mounted	ea		1		*	*	2	19	
28	3	P	H		6645-078-4142	TIMER, INTERVAL	ea		1		1	2	2	5	
29	3	P	H		6645-078-4143	TIMER, INTERVAL, 110 v, 60 cycle, equipped w/ automatic electric circuit control switch	ea		1		1	2	2	1	
30	11	P1	H		5950-817-5134	TRANSFORMER, POWER, STEP-DOWN AND STEP-UP, double shell, metal case, primary 117 volts, 60 cycles single phase, 10 wire lead type terminals, stud mtg	ea		1		*	2	2	8	
31	3	P1	F		5310-045-0591	WASHER, LOCK, steel, split helical ring, cad or zinc pltd, No. 6 nom screw size	ea		40	*	*	*	2	3	
32	9	P1	F		5310-209-5309	WASHER, LOCK, steel, split helical ring, cad or zinc pltd, No. 8 nom screw size	ea		29	*	*	*	2 3	10 3	
Mechanical Components Section															
33	3	P1	O	R	6665-778-6003	CHASSIS ASSEMBLY	ea		1	*	*	5	4, 5, 6		
34	3	P1	F		4730-554-7792	ADAPTER, STRAIGHT, PIPE TO HOSE, brass, let end, thd male, 1/8 in. - 27 NPT, 2nd end, unthreaded male, 1/4 in. nom hose size, 1-3/8 in. lg overall	ea		3	*	*	*	4	44	
85	5	P1	F		4730-618:0509	ADAPTER, STRAIGHT, PIPE TO TUBE, brass, let end, thd male, 1/4 in. od tube, 7/16 in. - 20 thd size, 2nd end, thd male, 1/8 in. - 27 NPT	ea		6	*	*	*	5 6	16 11	

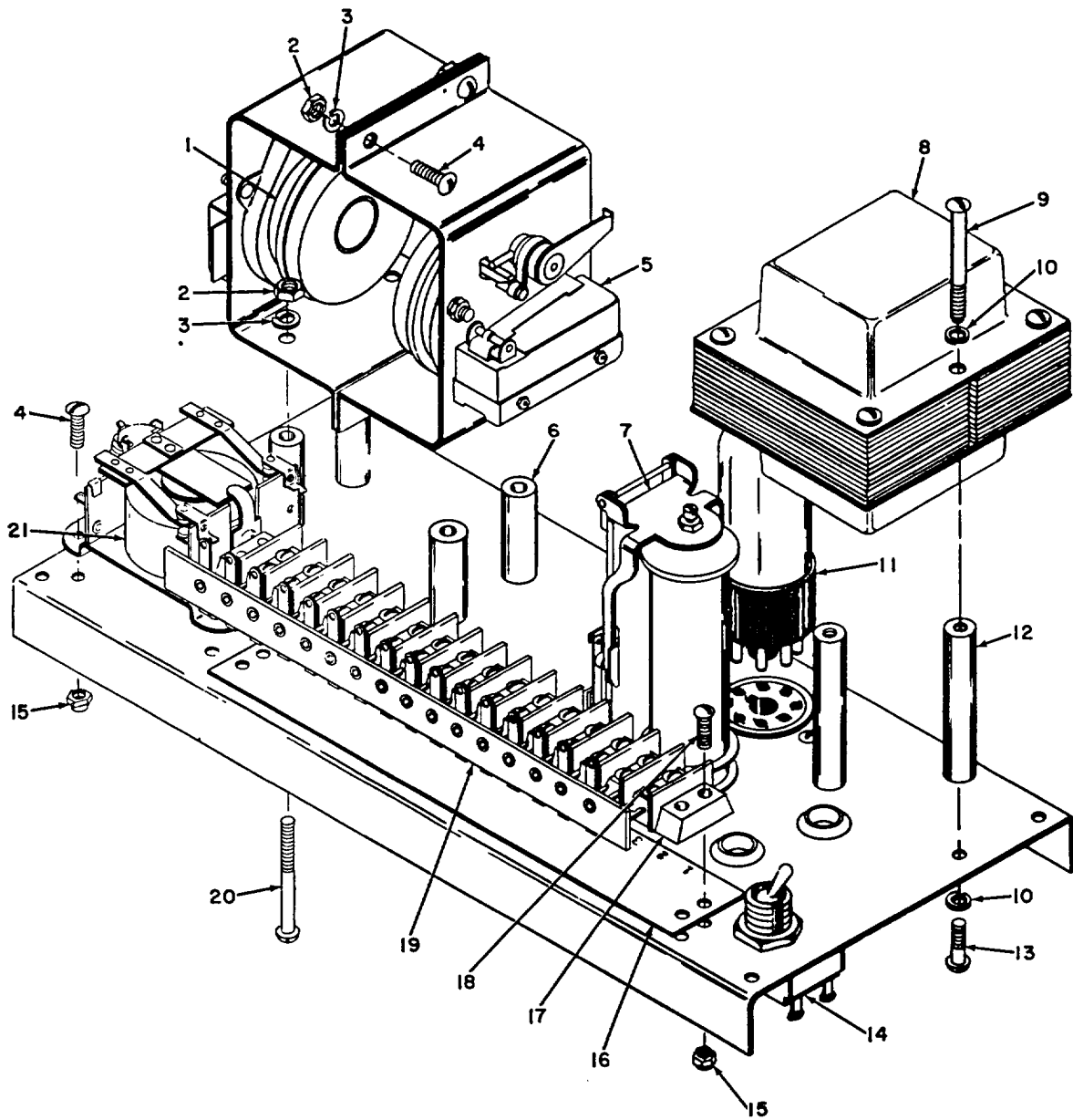


Figure 2. Electric chassis assembly, top view.

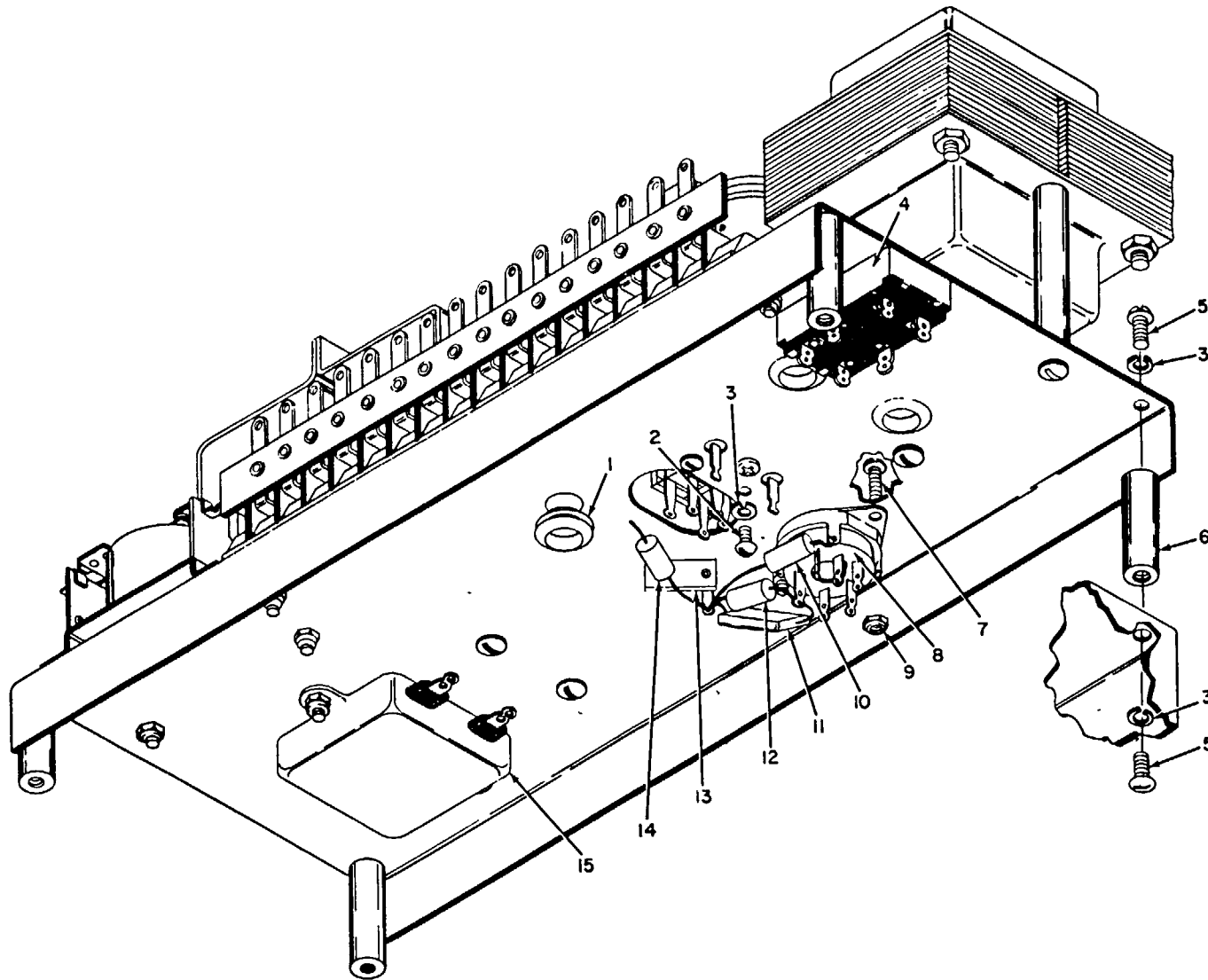


Figure 3. Electric chassis assembly, bottom view.

INDEX NO.	S, M, R CODE					FEDERAL STOCK NUMBER	DESCRIPTION	UNIT OF ISSUE	EXPEND-ABILITY	QUANTITY PER UNIT	15 DAY MAINT ALW PER 100 EQUIP			ILLUS-TRATIONS	
	MATERIEL CODE NO.	SOURCE	MAINTENAN CE LEVEL	RECOVER-ABILITY	3RD ECH						4th ECH	5th ECH	FIG. NO	ITEM NO.	
36	3	P1	O		6665-778-7117	ADAPTER, TEST VALVE	ea		2	*	*	*	4	2	
37	5	P1	F		6350-284-1357	BELL, ELECTRIC, 6 v, 60 cycle, nonadjustable, aluminized, 5 in. lg, 3 in. w, 1 in. h	ea		1		*	*	5	22	
38	3	X2	H		6665-893-2659	BLOCK, ORIFICE	ea		1		*	*	5	17	
39	11	X2	H		5895-323-9921	BRACKET	pr		1		*	*	4	27	
40	3	M	H			BRACKET, MICRO SWITCH	ea		1				4	47	
41	3	M	H			BRACKET, PANEL GUIDE, LEFT HAND	ea		1				4	41	
42	3	M	H			BRACKET, PANEL GUIDE, RIGHT HAND	ea		1				4	21	
43	3	X2	H		6665-778-3481	BRACKET, VALVE MOUNTING	ea		1		*	*	6	14	
44	3	P1	H		6665-778-3484	BUSHING, TEST VALVE	ea		1		*	*	4	6	
45	3	P1	H		6665-778-7121	CAP, FILTER	ea		3		*	*	6	25	
46	11	P1	H		5910-112-7524	CAPACITOR, FIXED, PAPER DIELECTRIC, 600 v DC, 100, 000 UUF, metal case, uninsulated, hermetically sealed, 1 in. deep, 3/4 in. h, 1-13/16 in. w, 2 terminal lug type	ea		1		*		5	5	
47	3	P1	H		6665-778-3485	COLLAR, TEST VALVE	ea		1		*	*	4	15	
48	11	P1	F		5935-807-7979	CONNECTOR, PLUG, ELECTRICAL, 4 contacts, plastic dielectric, w/inclosing metal shell, polarized, non-locking type	ea		2	*	*	*	4	38	
49	11	P1	H		5935-644-6804	CONNECTOR, RECEPTACLE, ELECTRICAL, 2 contacts, plastic dielectric, nonlocking type	ea		1		*	*	4	31	
50	11	P1	H		5935-817-6463	CONNECTOR, RECEPTACLE, ELECTRICAL, 4 contacts, plastic dielectric, straight, polarized, nonlocking type, 2 mtg holes	ea		2		*	*	4	39	
													5	18	

INDEX NO.	S, M, R CODE					FEDERAL STOCK NUMBER	DESCRIPTION	UNIT OF ISSUE	EXPEND-ABILITY	QUANTITY PER UNIT	15 DAY MAINT ALW PER 100 EQUIP			ILLUS-TRATIONS	
	MATERIEL CODE NO.	SOURCE	MAINTENANCE LEVEL	RECOVER-ABILITY	3RD ECH						4th ECH	5th ECH	FIG. NO	ITEM NO.	
51	5	P1	H		4730-277-5552	ELBOW, PIPE, brass, 1st end, thd female, 1/8 in. - 27 NPT, 2nd end, thd male, 1/8 in. - 27 NPT, 90 deg	ea		5		*	*	4	43	
52	5	P1	F		4730-810-9803	ELBOW, PIPE TO TUBE, brass, 1/8 in. - 27 thd size NPT 1/4 in. - 24 thd size NF tube end	ea		10	*	*	*	6	3	
53	5	P1	H		4730-822-6801	ELBOW, PIPE TO TUBE, brass, 1/4 in. od tube, 1/4 m. -18 thd size	ea		1		*	*	6	18	
54	3	P	O		6665-778-3482	FILTER, ORIFICE, pkg 10 per bag	bg		4 ea	20	40	200	6	6	
55	3	P1	H		6665-784-0001	FLANGE, FILTER MOUNTING	ea		2		*	*	6	5	
56	3	P1	H		6665-784-0002	FLANGE, TEST VALVE	ea		1		*	*	4	13	
57	5	P	O		5920-280-8348	FUSE	ea		1	(8)	(10)	20	4	36	
58	11	P1	F		5920-581-7213	FUSE HOLDER, extractor post type, 1 cartridge type, 1-1/4 in. lg, 1/4 in. dia, plastic body, 2 terminals	ea		1	*	*	*	4	37	
													5	20	
59	3	P1	H		6685-624-3667	GAGE, PRESSURE, DIAL INDICATING, diaphragm type, pressure scale, 3-1/2 in. dia dial size, 3 mtg holes, double connection, steel case	ea		1		*	*	4	9	
60	9	P1	F		5325-753-3959	GROMMET, RUBBER, natural rubber, 7/16 m. od, 5J6 in. od groove, 3/32 m. thk flange, 3/16 in. dia hole, 7/32 in. h o/a	ea		1	*	*	*	5	30	
61	10	P1	F		5325-801-3103	GROMMET, RUBBER, synthetic rubber, 1-1/2 in. od of flange, 1-1/4 in. od of groove, 3/32 in. thk flange, 1/2 in. dia hole, 1/4 in. h overall, 1/16 in. w groove (See index No. 6 for quantities and allowances)	ea						4	28	
62	3	M	H			HANDLE, PANEL	ea		2		*	*	5	1	
63	3	P1	H		6665-778-7118	HOLDER, FILTER	ea		1		*	*	6	7	
64	3	P1	H		6665-778-7119	HOUSING, BLEEDER	ea		1		*	*	4	45	

INDEX NO.	S, M, R CODE					FEDERAL STOCK NUMBER	DESCRIPTION	UNIT OF ISSUE	EXPEND-ABILITY	QUANTITY PER UNIT	15 DAY MAINT ALW PER 100 EQUIP			ILLUS-TRATIONS	
	MATERIEL CODE NO.	SOURCE	MAINTENANCE LEVEL	RECOVER-ABILITY	3RD ECH						4th ECH	5th ECH	FIG. NO	ITEM NO.	
65	3	X2	H		6665-778-3487	HOUSING, ORIFICE	ea		2		*	*	6	23	
66	3	X2	H		5355-808-0067	KNOB, setscrew type, octagon shape, phenolic body, black body, w/o marking	ea		1		*	*	5	8	
67	5	P	O		6240-143-3049	LAMP, INCANDESCENT, 120 v, 6 w, type S-6, white light	ea		3	2	2	6	4 5	24 10	
68	5	P1	F		6210-814-4124	LIGHT, INDICATOR, 5/8 in. d(ha lens, red, 1 incandescent type screw base lamp, S-6 bulb, 2 solder lug type terminals, mtd by threaded bushing	ea		1	*	*	2	5	27	
69	5	P1	F		6210-081-0831	LIGHT, INDICATOR, w/lens, 1 in. dia, green, 1 lamp, incandescent type, screw base, S-6 bulb, 2 terminals	ea		1	*	*	2	4	7	
70	5	P1	F		6210-754-8312	LIGHT, INDICATOR, w/lens, 1 in. dia, red, 1 lamp, incandescent type, screw base, S-6 bulb, 2 terminals	ea		1	*	*	2	4	8	
71	3	P1	F		6665-780-0583	LOCK, SHAFT	ea		1	*	*	*	5	29	
72	3	X2	F		6665-778-3486	NAME PLATE	ea		1	*	*	*	5	25	
73	11	P1	F		4730-278-3758	NIPPLE, PIPE. brass, 1/8 in. nom pipe size 1/8 in. - 27 NPT	ea		3	*	*	*	6	27	
74	3	P1	H		6665-780-0585	NUT, BLEEDER LOCK	ea		1		*	*	5	6	
75	9	P1	F		5310-013-4530	NUT, PLAIN, HEXAGON, steel, cad or zinc pltd, No. 6-32 NC-2B (See index No. 7 for quantities and allowances)	ea						4 5	29 13	
76	9	P1	F		5310-012-0622	NUT, PLAIN, HEXAGON, steel, cad or zinc pltd, No. 8-32 NC-2B	ea		17	*	*	*	4 6	26 17	
77	9	P1	F		5310-012-0361	NUT, PLAIN, HEXAGON, steel, cad or zinc pltd, No. 10-24 NC-2B	ea		8	*	*	*	4	40	

INDEX NO.	S, M, R CODE					FEDERAL STOCK NUMBER	DESCRIPTION	UNIT OF ISSUE	EXPEND-ABILITY	QUANTITY PER UNIT	15 DAY MAINT ALW PER 100 EQUIP			ILLUS-TRATIONS	
	MATERIEL CODE NO.	SOURCE	MAINTENAN CE LEVEL	RECOVER-ABILITY	3RD ECH						4th ECH	5th ECH	FIG. NO	ITEM NO.	
78	3	P1	F		5310-081-8087	NUT, SELF-LOCKING, HEXAGON, steel, cad pltd, No. 6-32 NC-3B (See index No. 8 for quantities and allowances)	ea						6	20	
79	3	P1	H		4730-541-6188	NUT, TUBE COUPLING, brass, u/w 1/4 in. od tube size, 3/4 in, lg overall, 7/16 in. -20 UNF-2B, 5 per fiber can	cn	19 ea		*	*		4	11	
													5	15	
													6	10	
80	3	X2	H		6665-778-3483	PANEL	ea		1		*	*	5	11	
81	3	P1	O		6665-798-3442	PLUNGER, TEST VALVE	ea		1	*	*	*	4	1	
82	11	P1	H		5905-810-3979	RESISTOR, FIXED, WIRE WOUND, 150 OHM, 5 w, w/2 mounting brackets, 4 in. lg of body	ea		1		*		5	21	
83	3	P1	F		6665-779-5921	SCREW, BLEEDER ADJUST	ea		1	*	*	*	5	5	
84	3	P1	F		5305-012-5622	SCREW, DRIVE, steel, cad or zinc pltd, rd hd, 0.073 in. size, 3/16 in. lg	ea		4	*	*	*	5	26	
85	3	P1	F		5305-253-5623	SCREW, DRIVE, steel, cad or zinc pltd, No. 8 screw size, 1/2 in. lg	ea		2	*	*	*	5	28	
86	9	P1	F		5305-043-6639	SCREW, MACHINE, pan hd, slotted, steel, cad or zinc pltd, No. 4-40 NC-2A, 5/16 in. lg	ea		22	*	*	*	6	24	
87	9	P1	F		5305-043-6642	SCREW, MACHINE, pan hd, slotted, steel, cad or zinc pltd, No. 4-40 NC-2A, 1/2 in. lg	ea		6	*	*	*	6	9	
88	9	P1	F		5305-043-6663	SCREW, MACHINE, pan hd, slotted, steel, cad or zinc pltd, No. 6-32 UNC-2A, 3/8 in. lg	ea		10	*	*	*	4	32	
													5	9	
89	9	P1	H		5305-043-6665	SCREW, MACHINE, pan hd, slotted, steel, cad or zinc pltd, No. 6-32 UNC-2A, 1/2 in. lg	ea		8		*	*	5	31	
													6	21	
90	3	P1	F		5305-639-4629	SCREW, MACHINE, pan hd, slotted, steel, cad or zinc pltd, No. 6-32 NC-2A, 1 in. lg	ea		2	*	*	*	4	49	

INDEX NO.	S, M, R CODE					FEDERAL STOCK NUMBER	DESCRIPTION	UNIT OF ISSUE	EXPEND-ABILITY	QUANTITY PER UNIT	15 DAY MAINT ALW PER 100 EQUIP			ILLUS-TRATIONS	
	MATERIEL CODE NO.	SOURCE	MAINTENANCE LEVEL	RECOVER-ABILITY	3RD ECH						4th ECH	5th ECH	FIG. NO	ITEM NO.	
91	9	P1	F		5305-043-6693	SCREW, MACHINE, pan hd, slotted, steel, cad or zinc pltd, No. 8-32 NC-2A, 3/8 in. lg	ea		16	*	*	*	3 6	5 15	
92	9	P1	F		5305-043-6696	SCREW, MACHINE, pan hd, slotted, steel, cad or zinc pltd, No. B-32 UNC-2A, 5/8 in. lg	ea		3	*	*	*	4 5	10 7	
93	9	P1	F		5305-043-6730	SCREW, MACHINE, pan hd, slotted, steel, cad or zinc pltd, No. 10-24 UNC-2A, 3/8 in. g	ea		4	*	*	*	4	23	
94	9	P1	H		5305-043-6732	SCREW, MACHINE, pan hd, slotted, steel, cad or zinc pltd, No. 10-24 UNC-2A, 1/2 in. lg	ea		16		*	*	4 6	42 13	
95	9	P1	F		5305-043-6750	SCREW, MACHINE, pan hd, slotted, steel, cad or zinc pltd, No. 10-32 UNF-2A, 1/2 in. lg	ea		2	*	*	*	6	26	
96	P1	F			5305-059-4553	SCREW, MACHINE, steel, cad or zinc pltd, flat counter-sunk hd, slot drive, No. 6-32 NC-2A, 1/2 in. lg	ea		4	*	*	*	4	14	
97	10	P1	F		5305-818-4991	SETSCREW, socket hd, steel, cad or zinc pltd, No. 8-32 NC-3, 5/16 in. lg, flat point	ea		2	*	*	*	4	12	
98	9	P1	F		5305-682-5989	SETSCREW, steel, cad or zinc finish, headless, No. 10-32 NF-3, 5/16 in. lg	ea		1	*	*	*	4	5	
99	3	P1	H		6665-780-0584	SLEEVE	ea		1		*	*	4	3	
101	3	X2	H		6665-778-3480	SPACER	ea		4		*	*	3	6	
102	3	P1	H		6665-833-1219	SPRING, HELICAL COMPRESSION, steel, 4 coils, 0.043 in. size of material, 0.750 in. free O/A lg of spring, 0.406 in. id of spring	ea		1		*	*	4	4	
103	3	P	H		6665-777-1053	SWITCH	ea		1			5	10	4	48
104	11	P1	H		5930-265-6296	SWITCH, PUSH, plastic body, 1 plunger w/button 3/8 in. lg, 6 solder lug type terminals, bushing mtg	ea		1			*	2	4 5	17 4



INDEX NO.	S, M, R CODE					FEDERAL STOCK NUMBER	DESCRIPTION	UNIT OF ISSUE	EXPEND-ABILITY	QUANTITY PER UNIT	15 DAY MAINT ALW PER 100 EQUIP			ILLUS-TRATIONS	
	MATERIEL CODE NO.	SOURCE	MAINTENANCE LEVEL	RECOVER-ABILITY	3RD ECH						4th ECH	5th ECH	FIG. NO	ITEM NO.	
105	11	P1	H	5930-756-0271		SWITCH, ROTARY, 3 position, 2 moving contacts, 8 fixed contacts, 4 dummy terminals, 2 poles, 3 throws, nonshorting type contacts, bushing mtd, rd type, w/separable knob, solder lug type	ea		1		1	2	4 5	18 3	
106	5	P1	H	5930-198-3938		SWITCH, TOGGLE, SPST, bat type actuator, 2 screw type terminals, bushing mtg	ea		3		*	6	4 5	19 2	
107	3	P1	H	4730-820-1556		TEE, PIPE, brass, 1st, 2nd ends, threaded female, 1/8 in. -27 NPT, rh, 0.54 in. leg lg, 3rd end, threaded female, 1/8 in. -27 NPT, rh, 0.43 in. leg lg	ea		1		*	*	6	28	
108	11	P1	H	5940-983-6045		TERMINAL BOARD, plastic, 4 terminals, double screw type, 2-1/8 in. lg. 7/8 in. w, 13/32 in. thk	ea		1		*	*	6	19	
109	11	P1	H	5940-983-6047		TERMINAL BOARD, plastic, 6 terminals, barrier type, double screw type, 2-7/8 in. Lg, 7/8 m. w, 13/32 in. h	ea		1		*	*	5	23	
110	11	P1	H	5950-811-5557		TRANSFORMER, POWER, STEP-DOWN, open frame, primary 117 v, 60 cy, secondary 6.3 v, 1.2 amps, 5 wire lead type terminals, 2 mtg holes	ea		1		*	2	5	24	
111	5	X2	F	4710-277-5525		TUBE, COPPER, seamless, 1/4 in. od, 0.035 in. wall thk, 25 to 30 ft lg	ft		16	*	*	*	4 5 6	46 14 2	
112	3	P1	O	4720-849-3206		TUBE, RUBBER, 1/8 in. id, 1/8 in. wall thk	ft		1 in.	*	*	*	6	22	
113	5	P1	O	4720-244-7786		TUBE, RUBBER, natural rubber, black, 3/16 min. id, 3/8 in. od	ft		6 in.	*	*	*	4	16	
114	3	P1	O	4720-244-7789		TUBE, RUBBER, natural rubber, black, 1/4 m. id, 3/32 in. wall thk	ft		18 in.	*	*	*	4	20	
115	55	P1	H	4810-632-4888		VALVE, SOLENOID	ea		2		*	*	6	4	
116	55	P1	H	4810-777-6601		VALVE, SOLENOID	ea		2		*	+	6	1	

INDEX NO.	S, M, R CODE					FEDERAL STOCK NUMBER	DESCRIPTION	UNIT OF ISSUE	EXPEND-ABILITY	QUANTITY PER UNIT	15 DAY MAINT ALW PER 100 EQUIP			ILLUS-TRATIONS	
	MATERIEL CODE NO.	SOURCE	MAINTENANCE LEVEL	RECOVER-ABILITY	3RD ECH						4th ECH	5th ECH	FIG. NO	ITEM NO.	
117	9	P1	F		5310-043-2226	WASHER, LOCK, split helical, steel, cad or zinc pltd, med, No. 10 nom screw size	ea		22	*	*	*	4 6	22 12	
118	9	P1	F		5310-209-5311	WASHER, LOCK, steel, split helical ring, cad or zinc pltd, No. 4 nom screw size	ea		56	*	*	*	6	8	
119	9	P1	F		5310-045-0591	WASHER, LOCK, steel, split helical ring, cad or zinc pltd, No. 6 nom screw size (See index No. 31 for quantities and allowances)	ea						4 5	30 12	
120	9	P1	F		5310-209-5309	WASHER, LOCK, steel, split helical ring, cad or zinc pltd, No. 8 nom screw size (See index No. 32 for quantities and allowances)	ea						4 6	25 16	
CALIBRATOR ASSEMBLY															
121	3	P	H	R	6665-779-5931	CALIBRATOR ASSEMBLY	ea		1		5	10	7		
122	5	P1	F		4730-618-0509	ADAPTER, STRAIGHT, PIPE TO TUBE, brass, 1st end, thd male, 1/4 in. od tube, 7/16 in. -20 thd size, 2nd end, thd male, 1/8 in. -27 NPT (See index No. 35 for quantities and allowances)	ea						7	1	
123	3	M	H			BRACKET, CALIBRATOR	ea		1				7	16	
124	3	P1	H		6665-779-5938	BUSHING, CONTACTOR NEEDLE	ea		1		*	*	7	12	
125	3	P1	F		4820-812-9029	COCK, PLUG, 1/8 in. valve size, brass, 1/4 in. nom od tube size, 1/8 in. nom pipe size, lever handle	ea		2	*	*	*	7	34	
126	3	P1	H		6665-779-5933	COLLAR, WORM SHAFT	ea		1		*	*	7	26	
127	5	P1	F		4730-810-9804	CROSS, PIPE, brass, 1/8 in. -27 NPT thd size	ea		2	*	*	*	7	2	
128	3	P	H		6665-779-5940	DIAPHRAGM	ea		1		(5)	10	7	5	

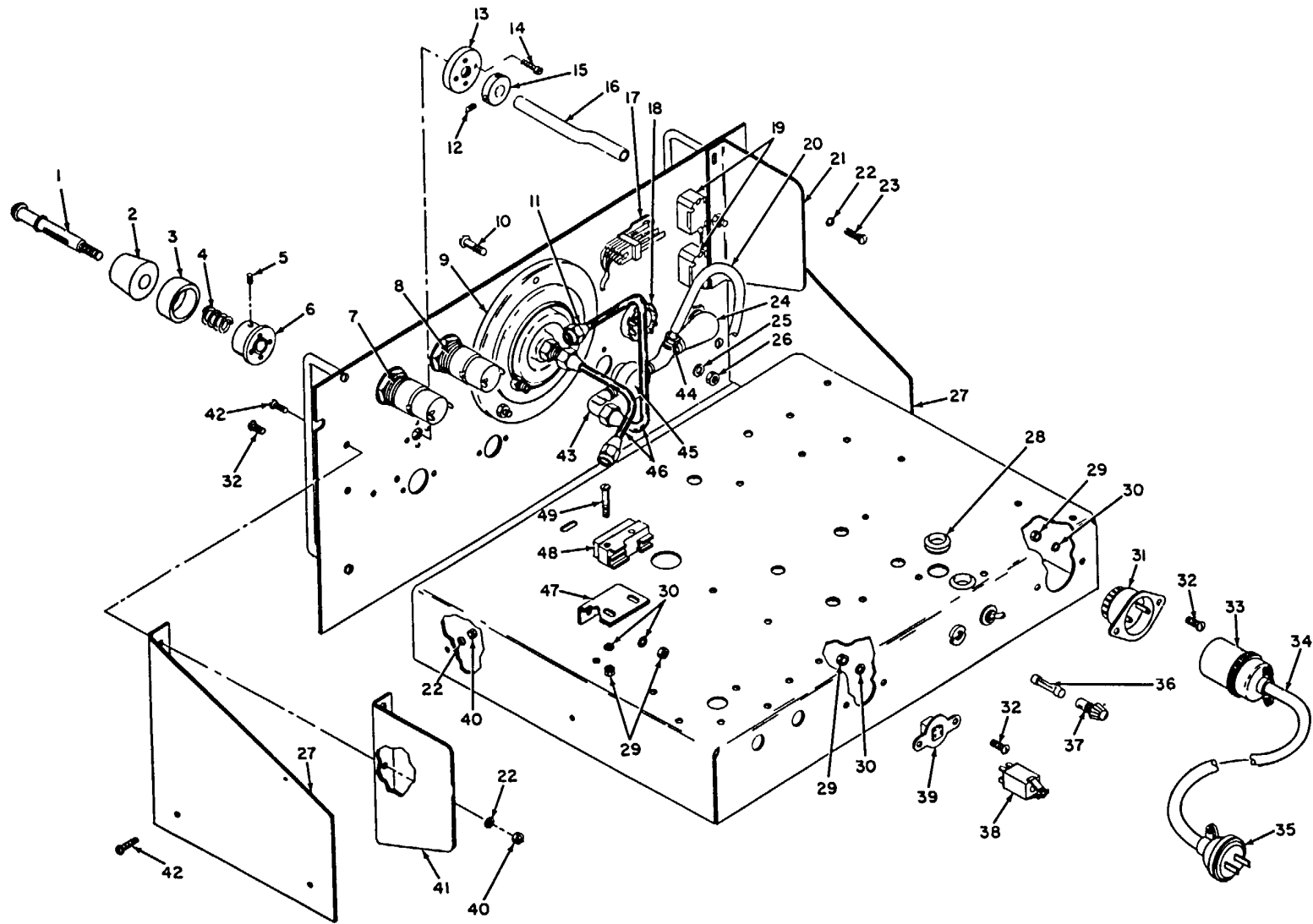


Figure 4. Chassis assembly, rear view.

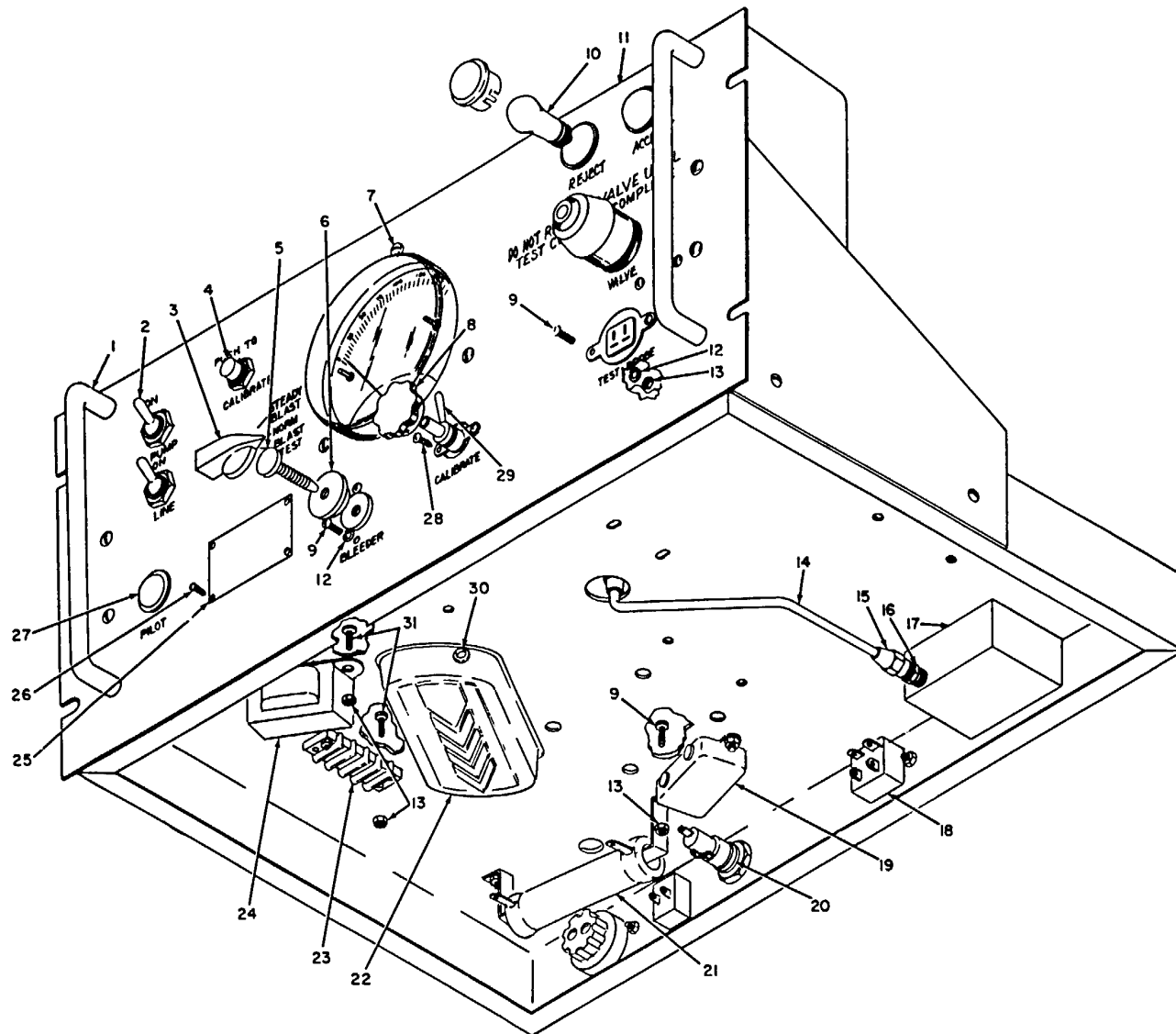


Figure 5. Chassis assembly, front and bottom view.

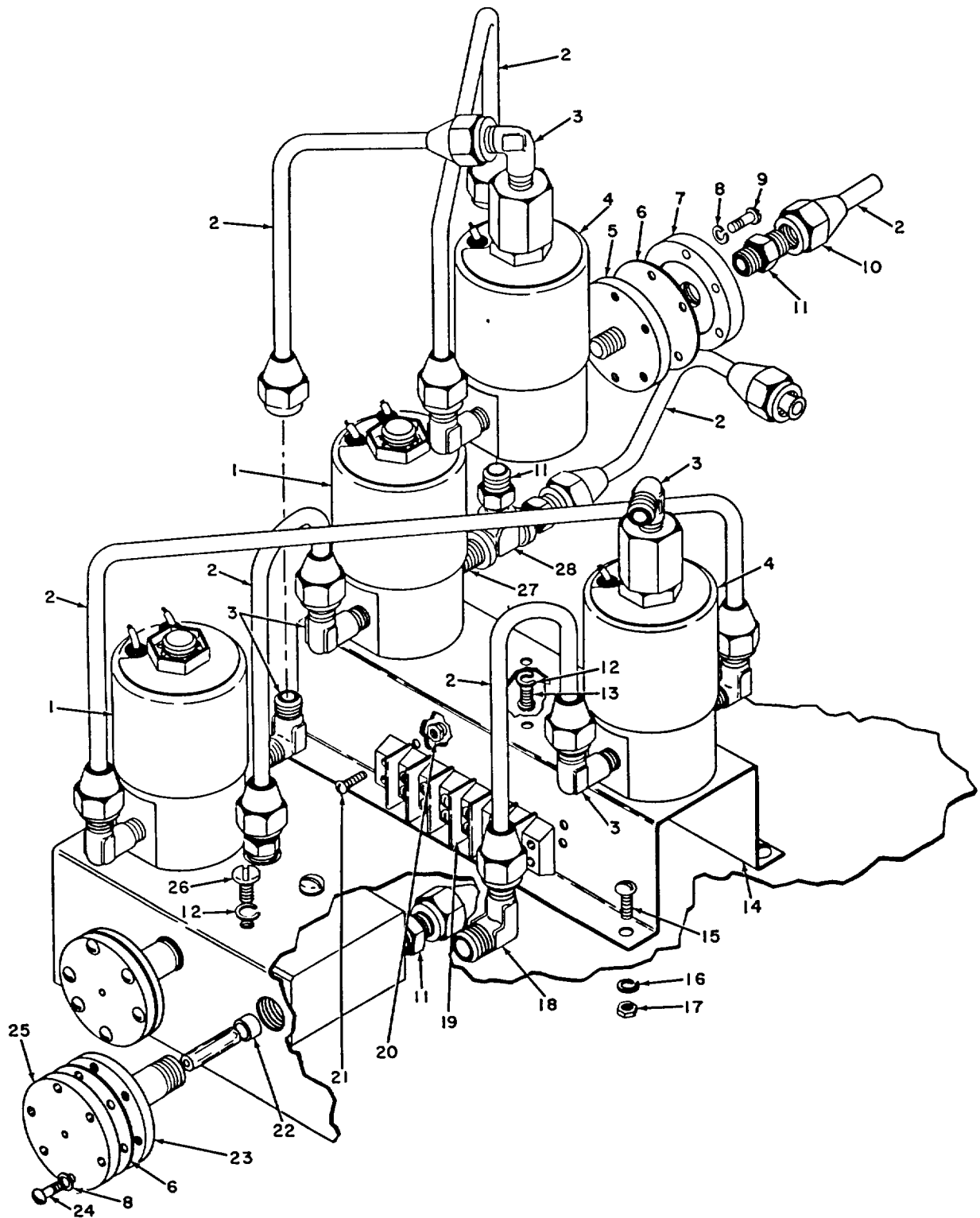


Figure 6. Chassis assembly - solenoid valves.

INDEX NO.	S, M, R CODE					FEDERAL STOCK NUMBER	DESCRIPTION	UNIT OF ISSUE	EXPEND-ABILITY	QUANTITY PER UNIT	15 DAY MAINT ALW PER 100 EQUIP			ILLUS-TRATIONS	
	MATERIEL CODE NO.	SOURCE	MAINTENAN CE LEVEL	RECOVER-ABILITY	3RD ECH						4th ECH	5th ECH	FIG. NO	ITEM NO.	
129	5	P	H		4730-277-5552	ELBOW, PIPE, brass, let end, thd female, 1/8 in. -27 NPT, 2nd end, thd male, 1/8 in. -27 NPT, 90 deg (See index No. 51 for quantities and allowances)	ea						7	33	
130	5	P1	F		4730-810-9803	ELBOW, PIPE TO TUBE, brass, 1/8 in. -27 thd size NPT 1/4 in. -24 thd size NF tube end (See index No. 52 for quantities and allowances)	ea						7	11	
131	3	P1	F		5325-281-6594	GROMMET, RUBBER, 7/16 in. od, 7/32 in. dia hole, 3/16 in. overall h, 1/16 in. w of groove	ea		3	*	*	*	7	14	
132	3	X2	H		6665-779-5932	HOUSING, CALIBRATOR	ea		1		*	*	7	8	
133	3	P1	H		6665-779-5937	INSULATOR, CONTACTOR	ea		1		*	*	7	13	
134	3	P1	H		6665-779-5941	NEEDLE ASSEMBLY	ea		1		*	*	7	15	
135	11	P1	F		4730-278-3758	NIPPLE, PIPE, brass, 1/8 in. nom pipe size, 1/8 in. -27 NPT (See index No. 73 for quantities and allowances)	ea						7	3	
136	11	P1	F		5315-808-7283	PIN, GROOVED, HEADLESS, steel, cad or zinc pltd 3/8 in. lg	ea		1	*	*	*	7	28	
137	3	X2	H		6665-779-5939	PLATE, CALIBRATOR	ea		1		*	*	7	4	
138	3	P1	H		5340-200-2637	RING, RETAINING, bryllium copper	ea		3		*	*	7	19	
139	9	P1	F		5305-043-6639	SCREW, MACHINE, pan hd, slotted, steel, cad or zinc pltd, No. 4-40 NC-2A, 5/16 in. lg (See Index No. 86 for quantities and allowances)	ea						7	29	
140	9	P1	F		5305-043-5885	SCREW, MACHINE, pan hd, slotted, steel, cad or zinc pltd, No. 6-32 UNC-2A, 5/16 in. lg (See index No. 16 for quantities and allowances)	ea						7	6	
141	9	P1	F		5305-043-6694	SCREW, MACHINE, pan hd, slotted, steel, cad or zinc pltd, No. 8-32 UNC-2A, 7/16 in. lg	ea		4	*	*	*	7	31	

INDEX NO.	S, M, R CODE				FEDERAL STOCK NUMBER	DESCRIPTION	UNIT OF ISSUE	EXPEND-ABILITY	QUANTITY PER UNIT	15 DAY MAINT ALW PER 100 EQUIP			ILLUS-TRATIONS	
	MATERIEL CODE NO.	SOURCE	MAINTENANCE LEVEL	RECOVER-ABILITY						3RD ECH	4th ECH	5th ECH	FIG. NO	ITEM NO.
142	9	P1	F		5305-043-6697	SCREW, MACHINE, pan hd, slotted, steel, cad or zinc pltd, No. 8-32 UNC-2A, 3/4 in. lg	ea		4	*	*	*	7	10
143	9	P1	F		5305-043-6748	SCREW, MACHINE, pan hd, slotted, steel, cad or zinc pltd, No. 10-32 UNF-2A, 3/8 in. lg	ea		1	*	*	*	7	18
144	9	P1	F		5305-249-0527	SETSCREW, hexagon socket, headless, cup point, No. 8-32 NC-3A, 3/16 in. lg	ea		1	*	*	*	7	25
145	9	P1	F		5305-249-0526	SETSCREW, hexagon socket, headless, No. 8-32 NC-SA, 3/8 in. lg	ea		1		*	*	7	27
146	3	P1	H		6665-784-0003	SHAFT, STOP	ea		1		*	*	7	24
147	3	P1	H		6665-779-5935	SHAFT, WORM	ea		1		*	*	7	20
148	3	P1	H		6665-815-6107	SPRING, HELICAL, COMPRESSION, steel, cad pltd, 9 coils, 8 active coils, 0.018 in. size of material	ea		1		*	10	7	21
149	11	P1	F		5940-283-8478	TERMINAL, LUG, bronze, w/locking device, for No. 6 screw, 7/8 in. lg, 5/16 in. w, 0.018 in. h	ea		1	*	*	*	7	7
150	11	P1	F		5940-155-7685	TERMINAL, LUG, bronze, w/locking device, for No. 10 screw, 57/64 in. lg. 11/32 in. w, 5/64 in. h	ea		1	*	*	*	7	17
151	5	X2	F		4710-277-5525	TUBE, COPPER, seamless, 1/4 in. od, 0.035 in. wall thk, 25 to S0 ft lg (See index No. 111 for quantities and allowances)	ft						7	35
152	9	P1	F		5310-198-9348	WASHER, FLAT, rd, steel, cad or zinc pltd, No. 8 nom screw size	ea		4	*	*	*	7	32
153	3	P1	H		5310-632-6721	WASHER, FLAT, rd, steel, No. 4 nom screw size	ea		1		*	*	7	22
154	9	P1	F		5310-209-5311	WASHER, LOCK, steel, split helical ring, cad or zinc pltd, No. 4 nom screw size (See index No. 118 for quantities and allowances)	ea						7	30

INDEX NO.	S, M, R CODE					FEDERAL STOCK NUMBER	DESCRIPTION	UNIT OF ISSUE	EXPEND-ABILITY	QUANTITY PER UNIT	15 DAY MAINT ALW PER 100 EQUIP			ILLUS-TRATIONS	
	MATERIEL CODE NO.	SOURCE	MAINTENANCE LEVEL	RECOVER-ABILITY	3RD ECH						4th ECH	5th ECH	FIG. NO	ITEM NO.	
155	9	P1	F		5310-209-5309	WASHER, LOCK, steel, split helical ring, cad or zinc pltd, No. 8 nom screw size (See index No. 32 for quantities and allowances)	ea						7	9	
156	3	P1	H		6665-779-5934	WORM  POWER CORD	ea		1	*	*		7	23	
157	5	P	F		6150-081-6742	CABLE ASSEMBLY, POWER, ELECTRICAL, 2 conductors, rubber jacket, 12 ft lg, o/a, w/male and female plug	ea		1	1	*	*	4	34	
158	3	P	F		5935-170-8139	CONNECTOR, PLUG, ELECTRICAL, standard, straight shape, nonlocking type	ea		1	1	2	50	4	35	
159	3	P	F		5935-259-4229	CONNECTOR, PLUG, ELECTRICAL, universal, straight shape, nonlocking type, 1/2 in. cable  HOLDER, ORIFICE	ea		1	1	2	50	4	33	
160	3	P1	F		6665-779-5930	HOLDER, BALANCED ORIFICE	ea		1	*	*	*	8	3	
161	3	P1	F		6665-779-9120	CAP, BALANCED ORIFICE	ea		2	*	*	*	8	1	
162	3	P1	F		4720-068-4249	TUBE, RUBBER, natural rubber, 0. 125 in. id, 0.094 in. wall thk  MOTOR AND PUMP ASSEMBLY	ft		1/2 in.	*	*	*	8	2	
163	3	P	F	R	6665-779-5926	MOTOR AND PUMP ASSEMBLY	ea		1	1	1	5	9		
164	3	P1	F		4730-554-7792	ADAPTER, STRAIGHT, PIPE TO HOSE, brass, 1st end, thd male, 1/8 in. -27 NPT, 2nd end, unthreaded male, 1/4 in. nom hose size,-1-3/8 in. lg overall (See index No. 34 for quantities and allowances)	ea						9	8	



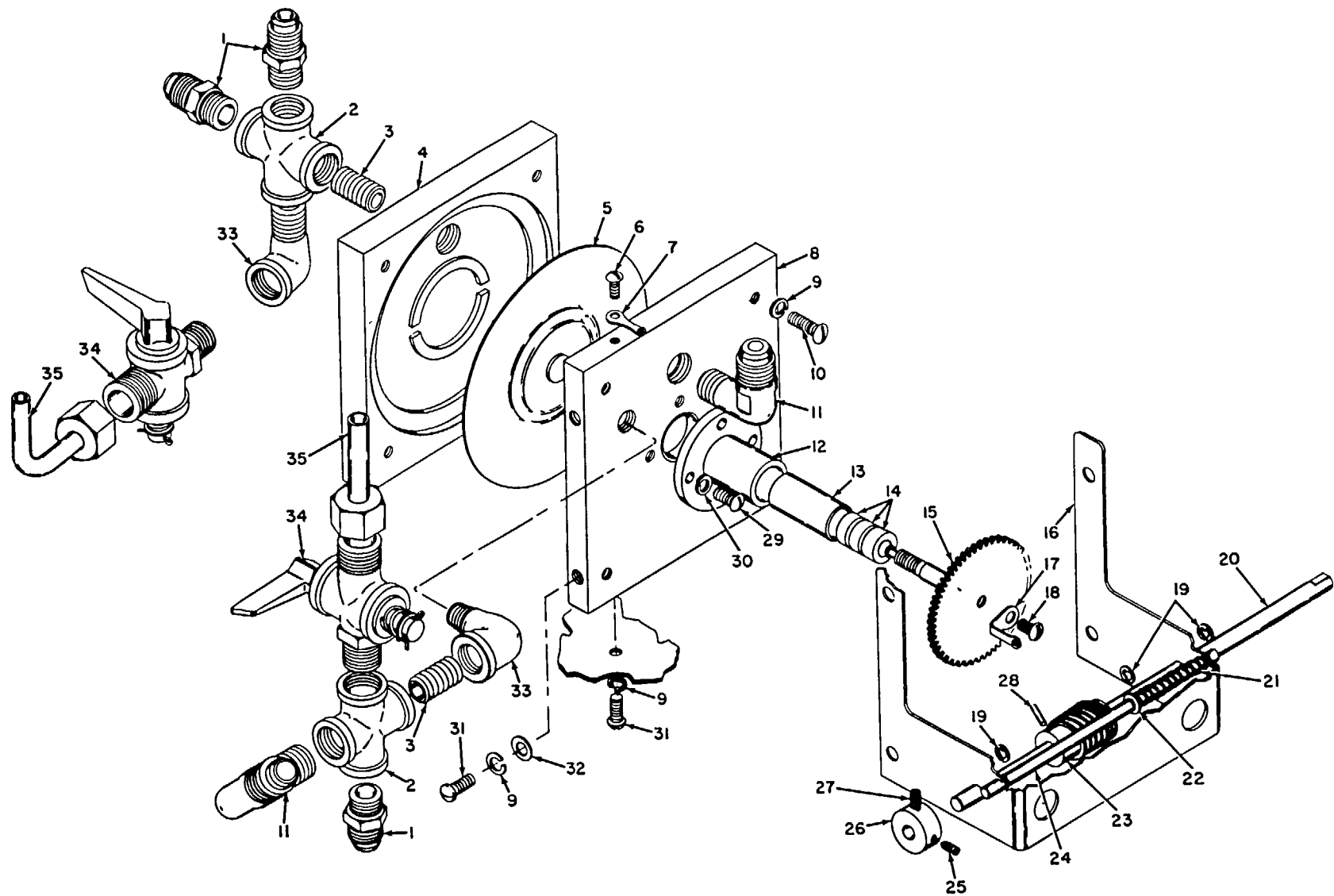


Figure 7. Calibrator assembly.

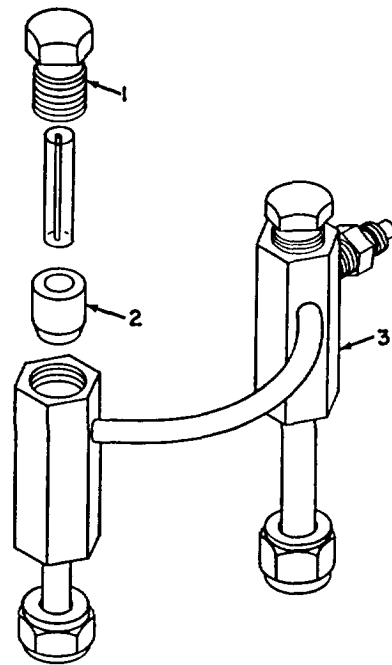


Figure 8. Orifice holder.

INDEX NO.	S, M, R CODE					FEDERAL STOCK NUMBER	DESCRIPTION	UNIT OF ISSUE	EXPEND-ABILITY	QUANTITY PER UNIT	15 DAY MAINT ALW PER 100 EQUIP			ILLUS-TRATIONS	
	MATERIEL CODE NO.	SOURCE	MAINTENANCE LEVEL	RECOVER-ABILITY	3RD ECH						4th ECH	5th ECH	FIG. NO	ITEM NO.	
165	3	X2	H	6665-778-9591		BRACKET, PUMP MOUNTING	ea		1		*	*	9	28	
166	11	P1	H	5977-730-7070		BRUSH, ELECTRICAL CONTACT, 3/16 in. dia, 1/2 in. lg, w/shunt spring and terminal	ea		2		*	*	9	37	
167	11	P1	H	5977-843-6359		BRUSH, ELECTRICAL CONTACT, 1/4 m. x 1/4 in., 3/4 in. lg, w/shunt spring and terminal	ea		2		*	*	9	35	
168	3	P1	F	4730-011-2877		BUSHING, PIPE, brass, 1/4 in. -18 NPT to 1/8 in. -27 NPT	ea		2	*	*	*	9	6	
169	3	P1	H	6665-779-5922		CAM, PUMP	ea		1		*	*	9	21	
170	3	P1	H	6665-778-7121		CAP, FILTER (See index No. 45 for quantities and allowances)	ea						9	3	
171	5	P1	H	4730-784-6783		CUP, OIL	ea		1		*	*	9	26	
172	3	X2	H	6665-778-9590		CYLINDER, PUMP	ea		1		*	*	9	23	
173	3	X2	H	6665-085-8908		DISK, MOTOR, MOUNT	ea		1		*	*	9	17	
174	5	P1	H	4730-277-5552		ELBOW, PIPE, brass, 1st end, thd female, 1/8 in. -27 NPT, 2nd end, thd male, 1/8 in. -27 NPT, 90 deg (See index No. 51 for quantities and allowances)	ea						9	7	
175	5	P1	F	4730-842-3524		ELBOW, PIPE TO HOSE, brass, 1/4 plastic to 1/8 NPT, 3/8-24	ea		1	*	*	*	9	27	
176	3	P	O	6665-778-3482		FILTER, ORIFICE, pkg 10 per bag (See index No. 54 for quantities and allowances)	bg						9	4	
177	3	P1	H	6665-784-0001		FLANGE, FILTER MOUNTING (See index No. 55 for quantities and allowances)	ea						9	5	
178	3	M	H			HANDLE, VALVE	ea		1				9	10	
179	3	X2	H	6665-784-1598		HOUSING, BLOWER	ea		1		*	*	9	13	

INDEX NO.	S, M, R CODE					FEDERAL STOCK NUMBER	DESCRIPTION	UNIT OF ISSUE	EXPEND-ABILITY	QUANTITY PER UNIT	15 DAY MAINT ALW PER 100 EQUIP			ILLUS-TRATIONS	
	MATERIEL CODE NO.	SOURCE	MAINTENANCE LEVEL	RECOVER-ABILITY	3RD ECH						4th ECH	5th ECH	FIG. NO	ITEM NO.	
180	5	P1	H		4450-396-0296	IMPELLER	ea		1		*	*	9	14	
181	5	P1	H		6105-974-1236	MOTOR, UNIVERSAL	ea		1		*	*	9	18	
182	9	P1	F		5310-012-0622	NUT, PLAIN, HEXAGON, steel, cad or zinc pltd, No. 8-32 NC-2B (See index No. 76 for quantities and allowances)	ea						9	16	
183	9	P1	H		5310-800-5282	NUT, PLAIN, HEXAGON, steel, cad or zinc pltd, 1/4 in. -20 UNC-2B	ea		5		*	*	9	31	
184	3	P1	H		6665-778-9592	PISTON, PUMP	ea		1		*	*	9	22	
185	5	P1	O		4710-809-8149	PLASTIC TUBING, polyethylene, 0.250 in. od, 0.040 in. wall thk, 300 in. lg. white	ft		6-1/2 in.		*	*	*	9	20
186	3	X2	H		6665-784-1597	PLATE, BLOWER MOUNTING	ea		1		*	*	9	36	
187	9	P1	H		5305-043-6639	SCREW, MACHINE, pan hd, slotted, steel, cad or zinc pltd, No. 4-40 NC-2A, 5/16 in. lg (See index No. 86 for quantities and allowances)	ea						9	1	
188	9	P1	F		5305-019-3257	SCREW, MACHINE, pan hd, slotted, steel, cad or zinc pltd, No. 6-32 UNC-2A, 1/4 in. lg	ea		7		*	*	*	9	39
189	9	P1	F		5305-043-6666	SCREW, MACHINE, pan hd, slotted, steel, cad or zinc pltd, No. 6-32 UNC-2A, 5/8 in. lg (See index No. 17 for quantities and allowances)	ea						9	34	
190	9	P1	F		5305-043-6728	SCREW, MACHINE, pan hd, slotted, steel, cad or zinc pltd, No. 10-24 UNC-2A, 1/4 in. lg	ea		1		*	*	*	9	25
191	3	P1	H		5305-558-3679	SCREW, MACHINE, pan hd, slotted, steel, cad or zinc pltd, 1/4 in. -20 NC-2A, 1 in. lg	ea		4		*	*	9	32	
192	3	P1	F		5305-811-2061	SETSCREW, steel, headless, socket drive, No. 8-32 NC-3, 1/2 in. lg, dog point	ea		2		*	*	*	9	19
193	3	P1	H		6665-778-9593	SPACER, BLOWER HOUSING	ea		1		*	*	9	15	

INDEX NO.	S, M, R CODE					FEDERAL STOCK NUMBER	DESCRIPTION	UNIT OF ISSUE	EXPEND-ABILITY	QUANTITY PER UNIT	15 DAY MAINT ALW PER 100 EQUIP			ILLUS-TRATIONS	
	MATERIEL CODE NO.	SOURCE	MAINTENANCE LEVEL	RECOVER-ABILITY	3RD ECH						4th ECH	5th ECH	FIG. NO	ITEM NO.	
194	8	P1	O		6640-441-0000	STOPPER, RUBBER, No. 4	ea		1	*	*	*	9	12	
195	5	X2	F		4710-277-5526	TUBE, COPPER, seamless, 5/16 in. od, 0.035 in. wall thk, 25 to 30 ft lg	ft		1-1/2 1 n.		*	*	9	11	
196	3	P1	O		4720-244-7789	TUBE, RUBBER, natural rubber, black, 1/4 m. id, 3/32 in. wall thk (See index No. 114 for quantities and allowances)	ft						9	9	
197	5	P1	F		4720-235-1781	TUBE, RUBBER, pure gum, natural, 1/4 in. id, 1/8 in. wall thk	ft		3.5 in.	*	*	*	9	29	
198	3	P1	F		6665-970-0002	VALVE AND BLOWER ADAPTER	ea		1	*	*	*	9	38	
199	3	P1	F		5310-809-3078	WASHER, FLAT, steel, cad or zinc, 1/4 in. nom bolt size	ea		5	*	*	*	9	30	
201	9	P1	F		5310-209-5311	WASHER, LOCK, steel, split helical ring, cad or zinc pltd, No. 4 nom screw size (See index No. 118 for quantities and allowances)	ea						9	2	
202	9	P1	F		5310-045-0591	WASHER, LOCK, steel, split helical ring, cad or zinc pltd, No. 6 nom screw size (See index No. 31 for quantities and allowances)	ea						9	33	
203	3	P1	F		5330-618-7768	WASHER, NONMETALLIC, fiber, 7/16 in. od, 13/64 in. id, 1/16 in. thk	ea		1	*	*	*	9	24	
						VALVE ASSEMBLY									
204	3	P1	F		6665-784-9221	VALVE ASSEMBLY	ea		1	*	*	*	10		
205	5	P1	H		4730-011-9928	BUSHING, PIPE, brass, 3/8 in.-18 NPT to 1/4 in.-18 NPT	ea		2		*	*	10	1	
206	9	P1	F		5310-012-0622	NUT, PLAIN, HEXAGON, steel, cad or zinc pltd, No. 8-32 NC-2B (See index No. 76 for quantities and allowances)	ea						10	4	

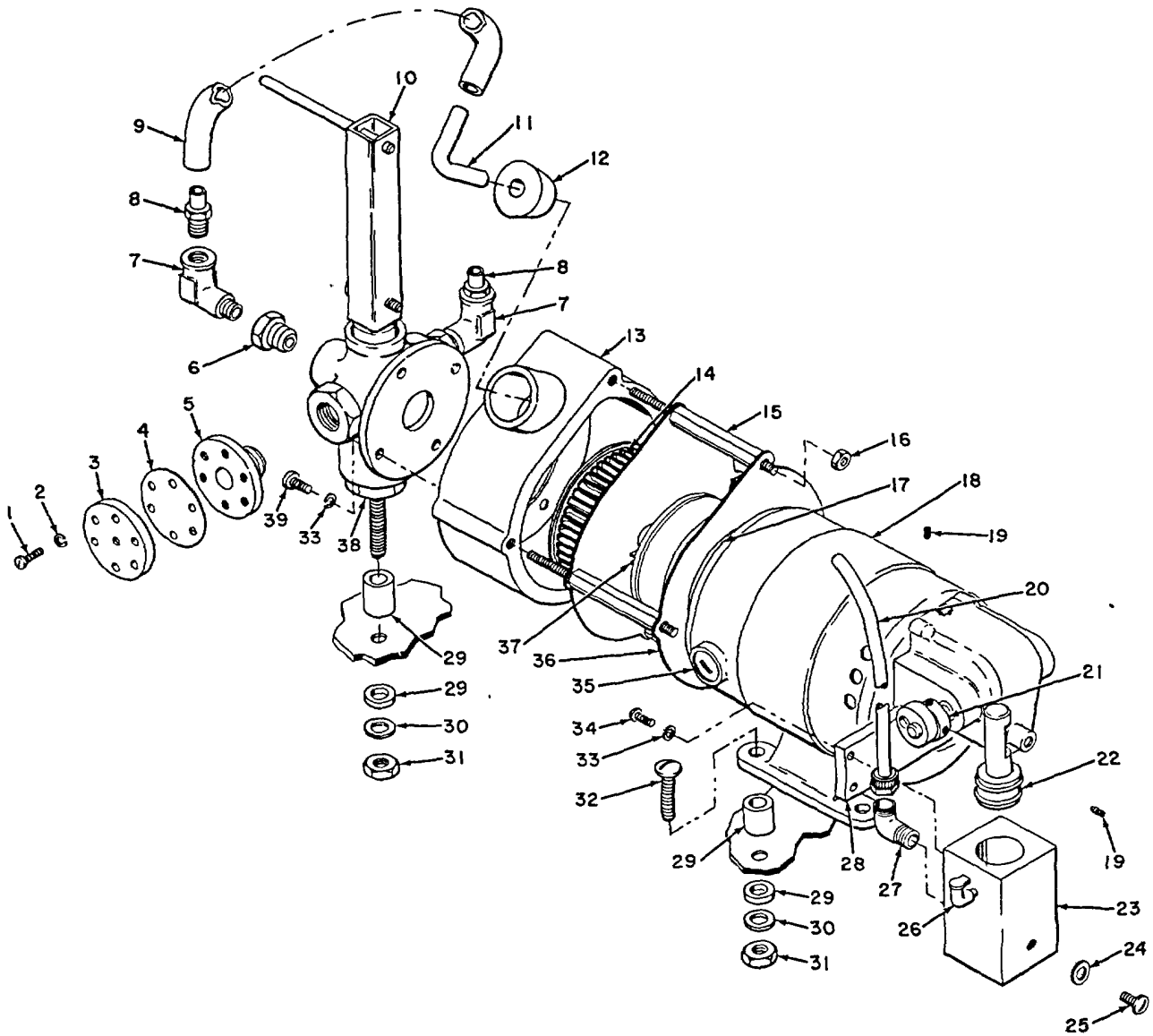


Figure 9. Motor and pump assembly.

INDEX NO.	S, M, R CODE					FEDERAL STOCK NUMBER	DESCRIPTION	UNIT OF ISSUE	EXPEND-ABILITY	QUANTITY PER UNIT	15 DAY MAINT ALW PER 100 EQUIP			ILLUS-TRATIONS	
	MATERIEL CODE NO.	SOURCE	MAINTENANCE LEVEL	RECOVER-ABILITY	3RD ECH						4th ECH	5th ECH	FIG. NO	ITEM NO.	
207	9	P1	F		5305-043-6693	SCREW, MACHINE, pan hd, slotted, steel, cad or zinc pltd, No. 8-32 NC-2A, 3/8 in. lg (See Index No. 91 for quantities and allowances)	ea						10	2	
208	9	P1	F		5310-209-5309	WASHER, LOCK, steel, split helical ring, cad or zinc pltd, No. 8 nom screw size (See index No. 32 for quantities and allowances)	ea						10	3	
GROUP 200 - CABINET															
209	3	P1	D	R	6665-777-6599	CABINET ASSEMBLY	ea		1				5	11	
210	3	P1	F		6665-776-4394	BRACKET, PROBE RETAINING	ea		1	*	*	*	11	7	
211	3	X2	D		6665-776-8820	CABINET	ea		1			*	11	1	
212	11	P1	F		5940-258-6412	CLIP, ELECTRICAL, ferrule style accommodates 9/16 in. dia material, bronze, uninsulated, 13/16 in. h, 19/32 in. lg, 5/8 in. w, 30 amp, 250 v	ea		1	*	*	*	11	4	
213	3	P1	F		6665-085-8944	DIAGRAM, WIRING	ea		1	*	*	*	11	10	
214	3	P1	H		6665-970-0001	HANDLE, PANEL	ea		2		*	*	11	14	
215	9	P1	F		5310-013-4524	NUT, PLAIN, HEXAGON, steel, cad or zinc pltd, No. 4-40 NC-2B	ea		20	*	*	*	11	5	
216	9	P1	F		5310-013-4530	NUT, PLAIN, HEXAGON, steel, cad or zinc pltd, No. 6-32 NC-2B (See index No. 7 for quantities and allowances)	ea						11	2	
217	9	P1	F		5305-983-6652	SCREW, CAP, steel, cad or zinc pltd, w/chromate, flat fillister hd, No. 10-32 NF-3A, 3/4 in. lg	ea		4	*	*	*	11	15	
218	9	P1	F		5305-043-6638	SCREW, MACHINE, pan hd, slotted, steel, cad or zinc pltd, No. 4-40 NC-2A, 1/4 in. lg	ea		8	*	*	*	11	8	

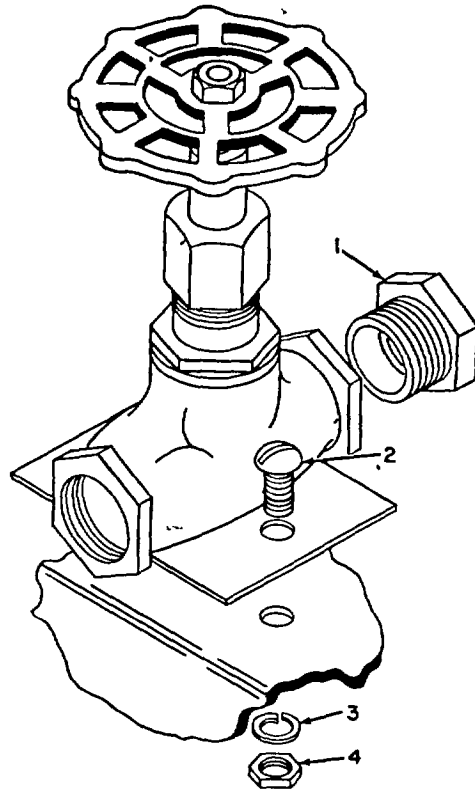


Figure 10. Valve assembly.



INDEX NO.	S, M, R CODE					FEDERAL STOCK NUMBER	DESCRIPTION	UNIT OF ISSUE	EXPEND-ABILITY	QUANTITY PER UNIT	15 DAY MAINT ALW PER 100 EQUIP			ILLUS-TRATIONS	
	MATERIEL CODE NO.	SOURCE	MAINTENANCE LEVEL	RECOVER-ABILITY	3RD ECH						4th ECH	5th ECH	FIG. NO	ITEM NO.	
219	9	P1	F		5305-019-3257	SCREW, MACHINE, pan hd, slotted, steel, ad or zinc pltd, No. 6-32 UNC-2A, 1/4 In. lg (See index No. 188 for quantities and allowances)	ea						11	9	
220	9	P1	F		5305-43-6693	SCREW, MACHINE, pan d, slotted, steel, cad or zinc pltd, No. 8-32 NC-2A, 3/8 in. lg (See index No. 91 for quantities and allowances)	ea						11	12	
221	3	P1	F		6665-776-8822	SPRING, BRACKET	ea		1	*	*	*	11	11	
222	9	P1	F		5310-209-5311	WASHER, LOCK, steel, split helical ring, cad or zinc pltd, No. 4 nom screw size (See index No. 118 for quantities and allowances)	ea						11	6	
223	9	P1	F		5310-045-0591	WASHER, LOCK, steel, split helical ring, cad or zinc pltd, No. 6 nom screw size (See index No. 31 for quantities and allowances)	ea						11	3	
224	9	P1	F		5310-209-5309	WASHER, LOCK, steel, split belies ring, cad or zinc pltd, No. 8 nom screw size (See Index No. 32 for quantities and allowances)	ea						11	13	
GROUP 300 - COVER															
225	3	P1	O	R	6665-775-8936	COVER, PANEL ASSEMBLY	ea		1	*	*	*	12		
226	3	P1	F		6665-776-4388	CLIP	ea		4	*	*	*	12	17	
227	3	P1	F		5940-666-4843	CLIP, ELECTRICAL, phosphor bronze, uninsulated, 29/64 in. h, 5/16 in. lg, 11/32 in. w	ea		5	*	*	*	12	2	
228	3	X2	D		6665-776-4387	COVER	ea		1			*	12	5	
229	3	X2	D		6665-776-4386	HANDLE, COVER	ea		2			*	12	7	
230	9	P1	H		5305-043-6640	SCREW, MACHINE, pan hd, slotted, steel, cad or zince pltd, No. 4-40 NC-2A, 3/8 in. lg	ea		4		*	*	12	11	

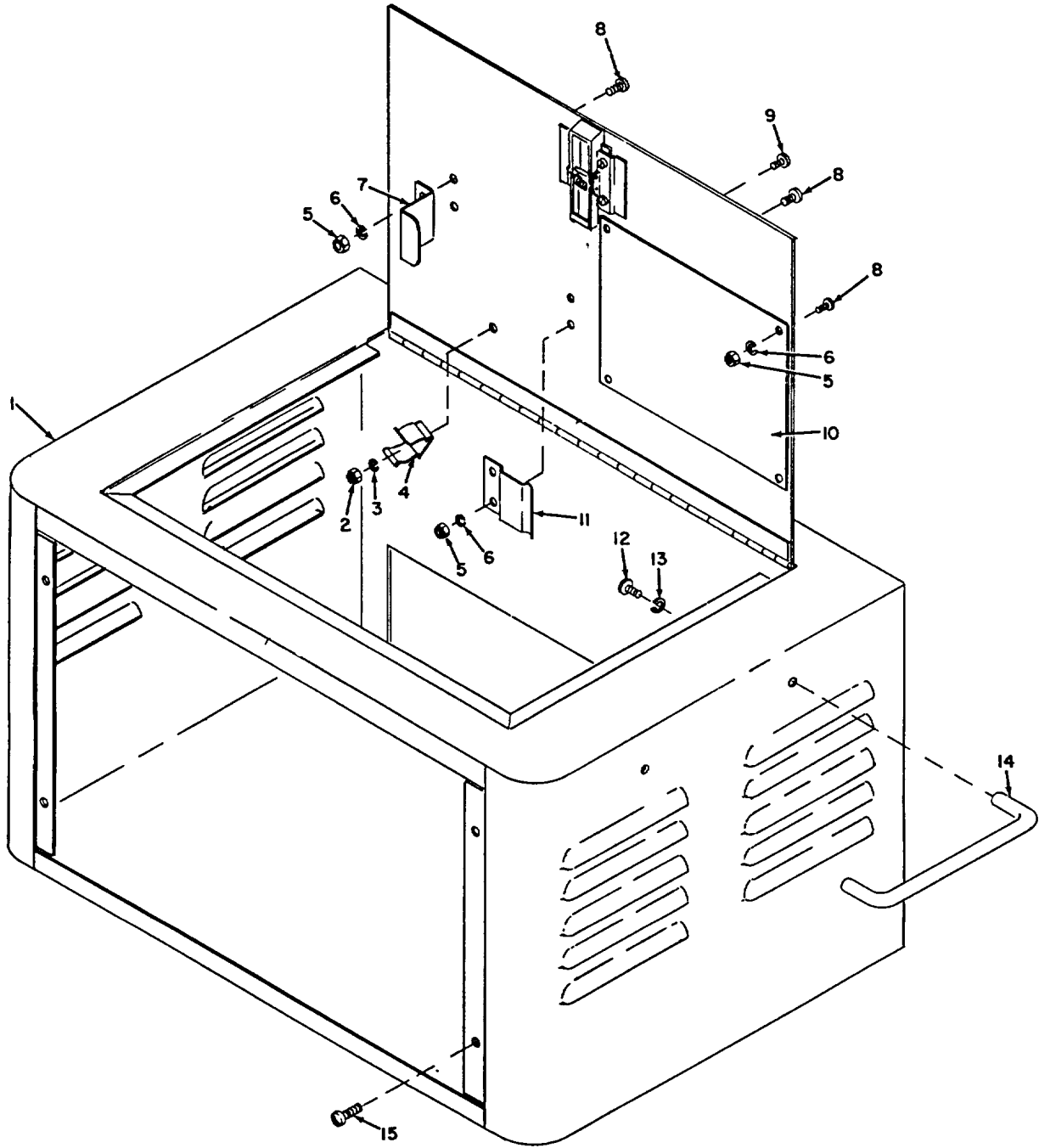


Figure 11. Cabinet assembly.

INDEX NO.	S, M, R CODE					FEDERAL STOCK NUMBER	DESCRIPTION	UNIT OF ISSUE	EXPEND-ABILITY	QUANTITY PER UNIT	15 DAY MAINT ALW PER 100 EQUIP		PER 100 EQUIP	ILLUS-TRATIONS	
	MATERIEL CODE NO.	SOURCE	MAINTENANCE LEVEL	RECOVER-ABILITY	3RD ECH						4th ECH	5th ECH		FIG. NO	ITEM NO.
231	3	P1	D		6665-085-8945	DIAGRAM, VACUUM	ea		1			*	12	6	
232	3	X2	F		6665-776-4390	MANOMETER, WATER	ea		1	*	*	*	12	19	
233	9	P1	F		5310-013-4524	NUT, PLAIN, HEXAGON, steel, cad or zinc pltd, No. 4-40 NC-2B (See index No. 215 for quantities and allowances)	ea						12	9	
234	9	P1	F		5310-013-4530	NUT, PLAIN. HEXAGON, steel, cad or zinc pltd, No. 6-32 NC-2B (See index No. 7 for quantities and allowances)	ea						12	13	
235	3	P	O		6665-808-8830	ORIFICE, pyrex, size 1	ea		2	3	5	60	12	14	
236	3	P	O		6665-808-8832	ORIFICE, pyrex, size 3	ea		2	3	5	60	12	15	
237	3	X2	D		6665-775-8931	PLATE, MANOMETER MTG	ea		1			*	12	4	
238	3	P1	F		6665-775-8934	SCALE, MANOMETER	ea		1	*	*	*	12	3	
239	10	P1	F		5305-043-6637	SCREW, MACHINE, pan hd, slotted, steel, cad or zinc pltd, No. 4-40 NC-2A, 3/16 in. lg	ea		23	*	*	*	12	1	
240	9	P1	F		5305-043-5885	SCREW. MACHINE, pan hd, slotted, steel, cad or zinc pltd, No. 6-32 UNC-2A, 5/16 in. lg (See index No. 16 for quantities and allowances)	ea						12	10	
241	3	P1	11		6665-775-8933	SPRING	ea		4		*	*	12	20	
242	3	P1	F		5340-291-3679	STRAP, RETAINING, steel, 5/16 in. inside h, 1/2 in. id, 1/2 in. w overall, 7/16 in. from center of arch to mtg hole center, 0.974 in. lg overall, 0.147 in. dia mtg hole, 0.037 in. thk material	ea		4	*	*	*	12	16	
243	5	P1	O		4720-809-3191	TUBE, RUBBER, natural rubber, 1/8 in. id, 1/8 in. wall thk, 30 in. lg	ea		1	*	*	*	12	18	

INDEX NO.	S, M, R CODE					FEDERAL STOCK NUMBER	DESCRIPTION	UNIT OF ISSUE	EXPEND-ABILITY	QUANTITY PER UNIT	15 DAY MAINT ALW PER 100 EQUIP			ILLUS-TRATIONS	
	MATERIEL CODE NO.	SOURCE	MAINTENANCE LEVEL	RECOVER-ABILITY	3RD ECH						4th ECH	5th ECH	FIG. NO	ITEM NO.	
244	9	P1	F		5310-209-5311	WASHER, LOCK, steel, split helical ring, cad or zinc pltd, No. 4 nom screw size (See index No. 118 for quantities and allowances)	ea						12	8	
245	9	P1	F		5310-045-0591	WASHER, LOCK, steel, split helical ring, cad or zinc pltd, No. 6 nom screw size (See index No. 31 for quantities and allowances)	ea						12	12	
GROUP 400 - PROBE															
246	3	P1	O	R	6665-792-2534	PROBE ASSEMBLY	ea		1	*	*	*	13		
247	3	P1	F		4730-554-7792	ADAPTER, STRAIGHT, PIPE TO HOSE, brass, 1st end, thd male, 1/8 in.-27 NPT, 2nd end, unthreaded male, 1/4 in. nom hose size, 1-3/8 in. lg overall (See index No. 34 for quantities and allowances)	ea			*	*	*	13	19	
248	3	P1	O		6665-778-7117	ADAPTER, TEST VALVE (See index No. 36 for quantities and allowances)	ea						13	4	
249	3	X2	H		6665-792-2535	BARREL, TEST PROBE	ea		1		*	*	13	3	
250	3	B2	H		6665-792-2536	BRACKET, MASK TESTING	ea		1		*	*	13	15	
251	5	P1	O		4730-585-8621	CLAMP, HOSE, steel, 13/16 in. to 7/8 in. id	ea		2	2	2	50	13	17	
252	11	P1	F		5935-807-7979	CONNECTOR, PLUG, ELECTRICAL, 4 contacts, plastic dielectric, w/incloding metal shell, polarized, non-locking type (See index No. 48 for quantities and allowances).	ea						13	12	
253	3	X2	F		8665-792-2538	COVER, SWITCH	ea		1	*	*	*	13	11	
254	11	P1	F		5970-836-2246	INSULATION SLEEVING, ELECTRICAL, flexible, fiber, color coded black .204 in. ld, 42 in. lg, vinyl coated, varnish impregnation	ea		1	*	*	*	13	13	

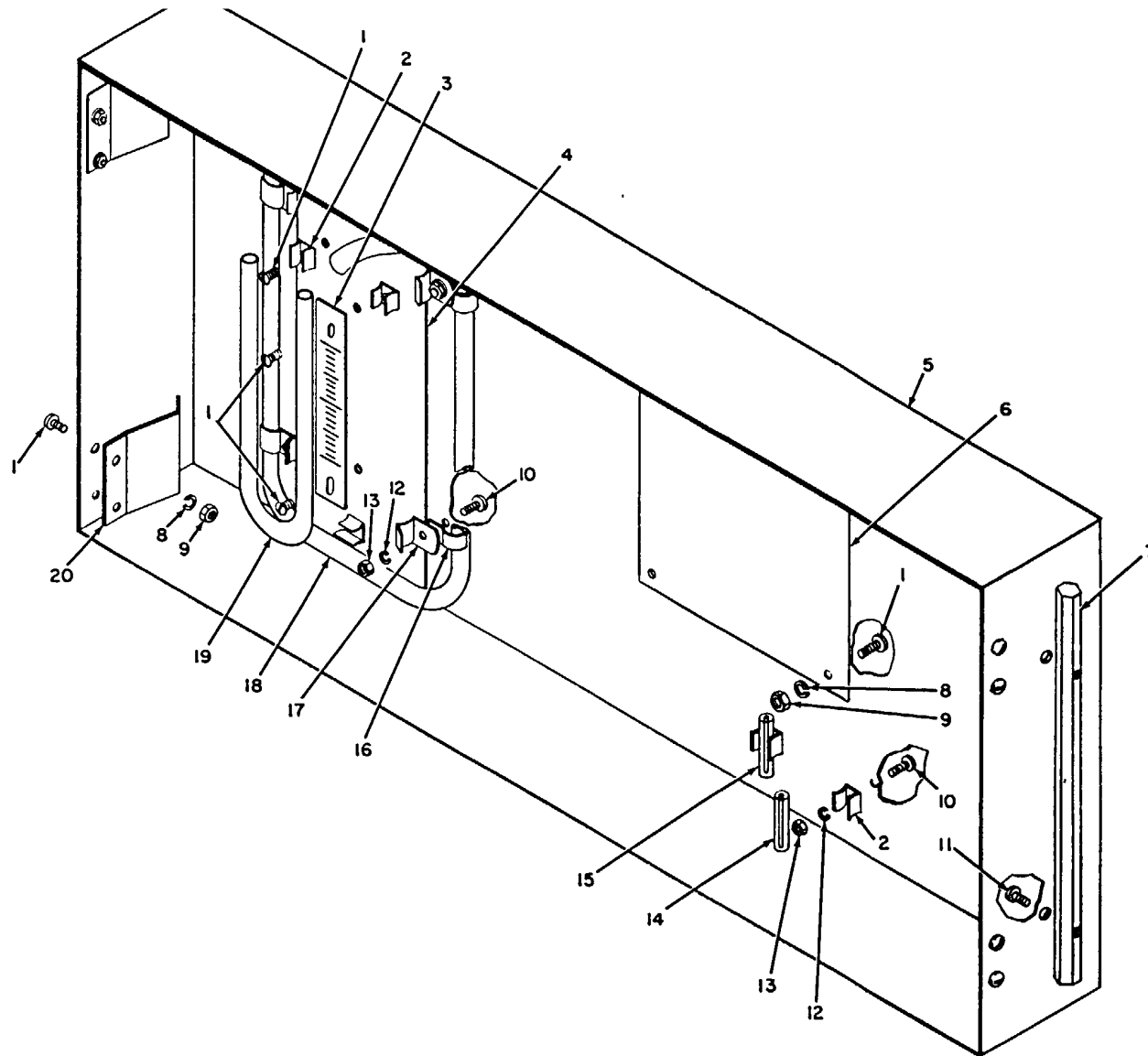


Figure 12. Panel cover assembly.

INDEX NO.	S, M, R CODE				FEDERAL STOCK NUMBER	DESCRIPTION	UNIT OF ISSUE	EXPEND-ABILITY	QUANTITY PER UNIT	15 DAY MAINT ALW PER 100 EQUIP			ILLUS-TRATIONS	
	MATERIEL CODE NO.	SOURCE	MAINTENANCE LEVEL	RECOVER-ABILITY						3RD ECH	4th ECH	5th ECH	FIG. NO	ITEM NO.
255	3	P1	F		5970-067-7635	INSULATION SLEEVING, ELECTRICAL, flexible, plastic, color coded black 7/8 In. id, vinyl coated	ft		3	*	*	*	13	18
256	3	P1	F		5970-184-2002	INSULATION TAPE, ELECTRICAL, black rubber, adhesive, 3/4 in. w, 30 ft roll, 0.027 in. thk	ft		1	*	*	*		
257	9	P1	H		5320-165-8793	RIVET, SOLID, flush countersunk head, aluminum alloy, 1/16 in. dia, 3/16 in. lg	ea		2		*	*	13	9
258	3	P1	F		6665-778-9586	SCREW ASSEMBLY	ea		1	*	*	*	13	14
259	10	P1	F		5305-043-6637	SCREW, MACHINE, pan hd, slotted, steel, cad or zinc pltd, No. 4-40 NC-2A, 3/16 in. lg (See index No. 239 for quantities and allowances)	ea						13	8
260	9	P1	F		5305-010-1014	SCREW, MACHINE, brass, flat countersunk hd, No. 6-32 NC-2A, 7/8 in. lg	ea		2	*	*	*	13	1
261	3	P1	O		6665-778-9587	SCREW, MASK TIP	ea		1	*	*	*	13	5
262	3	P1	O		6665-778-9588	SCREW, MASK TIP	ea		1	*	*	*		
263	3	P1	H		6665-776-4393	SPRING, TRIGGER	ea		1		*	*	13	6
264	3	P	H		5930-975-6967	SWITCH, SENSITIVE	ea		1		2	5	13	2
265	3	P	O		6665-792-2539	TIP, MASK TESTING	ea		1	5	10	50	13	4
266	3	P	O		6665-792-2540	TIP, MASK TESTING	ea		1	2	2	15	13	4
267	3	P1	H		6665-776-4392	TRIGGER, TEST PROBE	ea		1		*	*	13	10
268	3	P1	F		4720-826-8598	TUBING, RUBBER, neoprene, clear, 1/4 in. id, 1/8 in. wall thk 36 in. lg	ft		3	*	*	*	13	16
269	9	P1	F		5310-209-5311	WASHER, LOCK, steel, split helical ring, cad or zinc pltd, No. 4 nom screw size (See index No. 118 for quantities and allowances)	ea						13	7

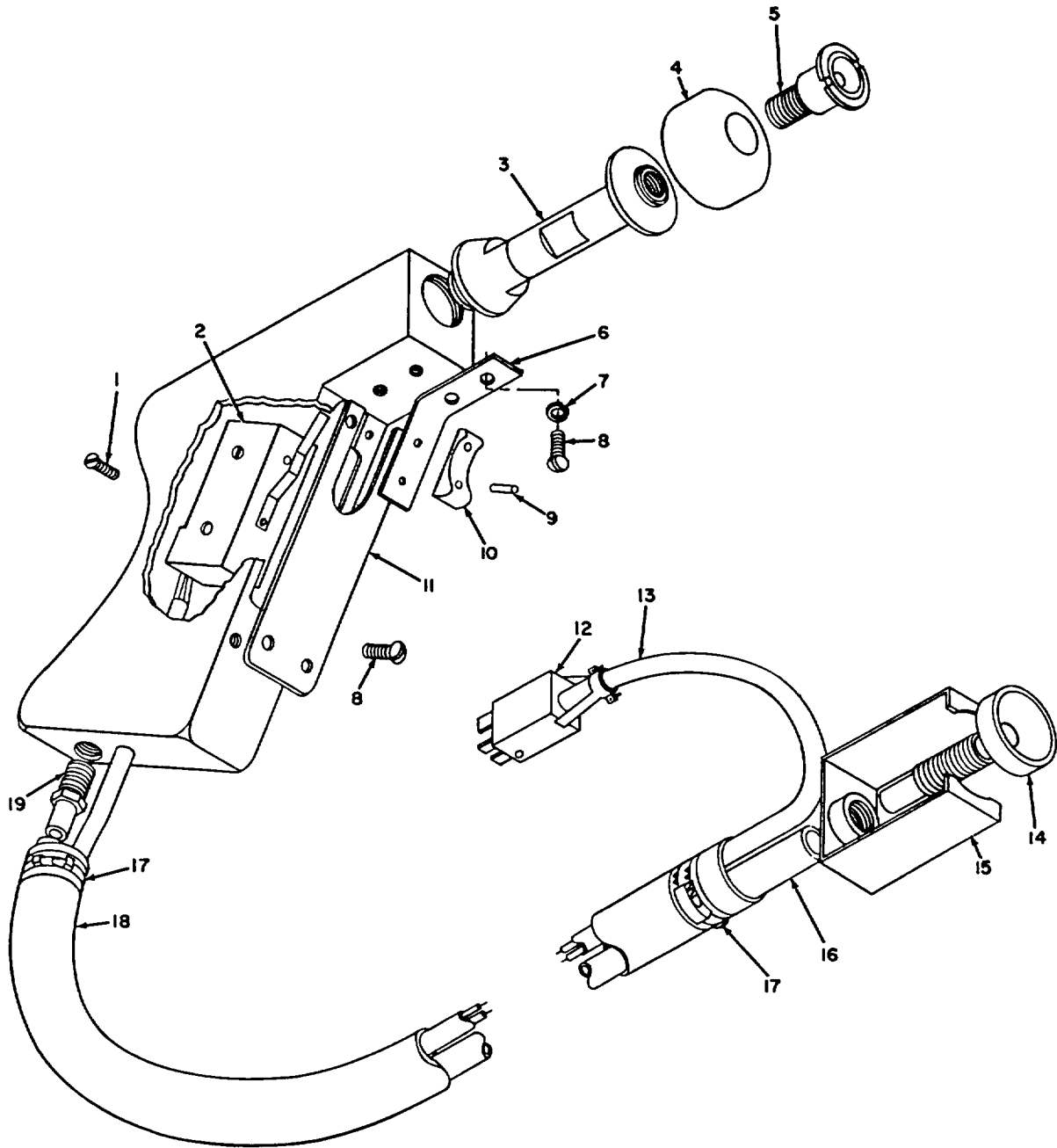


Figure 13. Test probe assembly.

INDEX NO.	S, M, R CODE					FEDERAL STOCK NUMBER	DESCRIPTION	UNIT OF ISSUE	EXPEND-ABILITY	QUANTITY PER UNIT	15 DAY MAINT ALW PER 100 EQUIP		PER 100 EQUIP	ILLUS-TRATIONS	
	MATERIEL CODE NO.	SOURCE	MAINTENANCE LEVEL	RECOVER-ABILITY	3RD ECH						4th ECH	FIG. NO		ITEM NO.	
													5th ECH		
GROUP 500 - ACCESSORY EQUIPMENT															
270	3	P1	F		6665-784-1602	ADAPTER, TESTING	ea		2	*	*	5			
271	3	P1	F		6665-736-3229	ADAPTER, TESTING	ea		2	*	*	5			
272	3	P	O		6665-808-8830	ORIFICE, pyrex, size 1 (See index No. 235 for quantities and allowances)	ea								
273	3	X2	O		6665-808-8831	ORIFICE, pyrex, size 2	ea		2	*	*	*			
274	3	P	O		6665-808-8832	ORIFICE, pyrex, size 3 (See index No. 236 for quantities and allowances)	ea								
275	3	P1	O		6665-808-8836	ORIFICE, pyrex, size 7	ea		2	*	*	*			
276	3	P1	O		6665-809-0466	ORIFICE, pyrex, size 14	ea		1	*	*	*			
277	3	P1	O		6665-809-0467	ORIFICE, pyrex, size 15	ea		2	*	*	*			
278	3	P1	O		6665-809-0468	ORIFICE, pyrex, size 16	ea		1	*	*	*			
279	3	P1	O		6665-474-7261	ORIFICE, pyrex, size 17	ea		2	*	*	*			
280	3	P1	O		6665-076-6992	ORIFICE, pyrex, size 18	ea		2	*	*	*			
281	3	P1	O		6665-076-6991	ORIFICE, pyrex, size 19	ea		2	*	*	*			
282	3	P1	O		6665-076-6990	ORIFICE, pyrex, size 20	ea		1	*	*	*			
283	3	P1	O		6665-076-6989	ORIFICE, pyrex, size 21	ea		1	*	*	*			
284	3	P1	O		6665-798-3438	PLUNGER, TEST VALVE ASSEMBLY	ea		1	*	*	5			
285	3	P1	O		6665-070-5551	ADAPTER (Dwg B136-45-195)	ea		1	*	*	*			
286	3	P1	O		6665-070-5554	ADAPTER (Dwg B136-45-149)	ea		1	*	*	*			



INDEX NO.	S, M, R CODE					FEDERAL STOCK NUMBER	DESCRIPTION	UNIT OF ISSUE	EXPEND-ABILITY	QUANTITY PER UNIT	15 DAY MAINT ALW PER 100 EQUIP		PER 100 EQUIP	ILLUS-TRATIONS	
	MATERIEL CODE NO.	SOURCE	MAINTENANCE LEVEL	RECOVER-ABILITY	3RD ECH						4th ECH	5th ECH		FIG. NO	ITEM NO.
287	3	P1	O		6665-798-3441	ADAPTER (Dwg A136-44-96)	ea		1	*	*	5			
288	3	P1	O		6665-798-8832	ADAPTER (Dwg A136-44-37)	ea		1	*	*	5			
289	3	P1	O		6665-798-8833	ADAPTER (Dwg A136-45-148)	ea		1	*	*	5			
290	3	P1	O		6665-798-8834	ADAPTER (Dwg A136-45-134)	ea		1	*	*	5			
291	3	P1	O		6665-070-5555	ADAPTER, CANISTER MOUNTING (Dwg C136-45-194)	ea		1	*	*	5			
292	3	P1	O		6665-070-5556	ADAPTER, TESTING (Dwg C136-45-196)	ea		1	*	*	5			
293	3	P1	O		6665-070-5550	ADAPTER ASSEMBLY (Dwg B136-45-190)	ea		1	*	*	*			
294	3	P1	O		6665-070-5549	BARREL ASSEMBLY (Dwg B136-45-191)	ea		1	*	*	*			
295	3	P1	O		6665-070-5553	CUP (Dwg A136-45-180)	ea		1	*	*	*			
296	3	P1	O		6665-784-9220	PLUNGER, TEST VALVE (Dwg A25-3-172)	ea		1	*	*	5			
297	3	P1	O		5330-799-6445	RETAINER (Dwg A136-45-146)	ea		1	*	*	5			
298	3	P1	O		6665-732-3394	TIP, TESTING (Dwg B136-45-181)	ea		1	*	*				
GROUP 600 - BULK MATERIAL															
299	9	P1	F		8040-275-1230	ADHESIVE, 1 pt can	cn		AR	*	*	1			
301	11	P1	H		6145-548-2966	WIRE, ELECTRICAL, Insulated, stranded, No. 18 AWG, copper, tinned finish, color coded black	ft		AR		*	*			
302	11	P1	H		6145-836-5654	WIRE, ELECTRICAL, Insulated, stranded, No. 18 AWG, copper, tinned finish, color coded black w/red tracer	ft		AR		*	*			
303	11	P1	H		6145-548-2975	WIRE, ELECTRICAL, insulated, stranded, No. 18 AWG, copper, tinned finish, color coded blue	ft		AR		*	*			

INDEX NO.	S, M, R CODE				FEDERAL STOCK NUMBER	DESCRIPTION	UNIT OF ISSUE	EXPEND-ABILITY	QUANTITY PER UNIT	15 DAY MAINT ALW PER 100 EQUIP			ILLUS-TRATIONS	
	MATERIEL CODE NO.	SOURCE	MAINTENAN CE LEVEL	RECOVER-ABILITY						3RD ECH	4th ECH	5th ECH	FIG. NO	ITEM NO.
304	11	P1	H		6145-548-2965	WIRE, ELECTRICAL, insulated stranded, No. 18 AWG, copper, tinned finish, color coded brown	ft	AR		*	*			
305	11	P1	H		6145-548-2962	WIRE, ELECTRICAL, insulated, stranded, No. 18 AWG, copper, tinned finish, color coded green	ft	AR		*	*			
306	11	P1	H		6145-754-8124	WIRE, ELECTRICAL, insulated, stranded, No. 18 AWG, copper, tinned finish, color coded orange	ft	AR		*	*			
307	11	P1	H		6145-295-0820	WIRE, ELECTRICAL, insulated, stranded, No. 18 AWG, copper, tinned finish, color coded red	ft	AR		*	*			
308	11	P1	H		6145-838-7829	WIRE, ELECTRICAL, insulated, stranded, No. 18 AWG, copper, tinned finish, color coded white	ft	AR		*	*			
309	11	P1	H		6145-839-3166	WIRE, ELECTRICAL, insulated, stranded, No. 18 AWG, copper, tinned finish, color coded white w/orange and violet tracers	ft	AR		*	*			
310	11	P1	H		6145-548-1422	WIRE, ELECTRICAL, insulated, stranded, No. 18 AWG, copper, tinned finish, color coded white w/orange tracer	ft	AR		*	*			
311	11	P1	H		6145-834-1304	WIRE, ELECTRICAL, insulated, stranded, No. 18 AWG, copper, tinned finish, color coded white w/red tracer	ft	AR		*	*			
312	11	P1	H		6145-295-0836	WIRE, ELECTRICAL, insulated, stranded, No. 18 AWG, copper, tinned finish, color coded yellow	ft	AR		*	*			

## SECTION III. INDEXES

## ALPHABETICAL INDEX

FEDERAL STOCK NUMBER	DESCRIPTION	INDEX NO.
6665-070-5551	ADAPTER	285
6665-070-5554	ADAPTER	286
6665-798-3441	ADAPTER	287
6665-798-8832	ADAPTER	288
6665-798-8833	ADAPTER	289
6665-798-8834	ADAPTER	290
6665-070-5555	ADAPTER, CANISTER MOUNTING	291
4730-554-7792	ADAPTER, STRAIGHT, PIPE TO HOSE	34, 164, 247
4730-618-0509	ADAPTER, STRAIGHT, PIPE TO TUBE	35, 122
6665-778-7117	ADAPTER, TEST VALVE	36, 248
6665-070-5556	ADAPTER, TESTING	292
6665-784-1602	ADAPTER, TESTING	270
6665-736-3229	ADAPTER, TESTING	271
6665-070-5550	ADAPTER ASSEMBLY	293
8040-275-1230	ADHESIVE	299
6665-792-2535	BARREL, TEST PROBE	249
6665-070-5529	BARREL ASSEMBLY	294
6350-284-1357	BELL, ELECTRIC	37
6665-893-2659	BLOCK, ORIFICE	38
5895-323-9921	BRACKET	39

## ALPHABETICAL INDEX (cont'd)

FEDERAL STOCK NUMBER	DESCRIPTION	INDEX NO.
	BRACKET, CALIBRATOR	123
6665-792-2536	BRACKET, MASK TESTING	250
	BRACKET, MICRO SWITCH	40
	BRACKET, PANEL GUIDE, LEFT HAND	41
	BRACKET, PANEL GUIDE, RIGHT HAND	42
6665-776-4394	BRACKET, PROBE RETAINING	210
6665-778-9591	BRACKET, PUMP MOUNTING	165
6665-778-3481	BRACKET, VALVE MOUNTING	43
5977-730-7070	BRUSH, ELECTRICAL CONTACT, 3/16 in. dia, 1/2 in. lg	166
5977-843-6359	BRUSH, ELECTRICAL CONTACT, 1/4 in. x 1/4 in., 3/4 in. lg	167
6665-779-5938	BUSHING, CONTACTOR NEEDLE	124
4730-011-2877	BUSHING, PIPE, 1/4 in. -18 NPT to 1/8 in. -27 NPT	168
4730-011-9928	BUSHING, PIPE, 3/8 in. -18 NPT to 1/4 in. -18 NPT	205
6665-778-3484	BUSHING, TEST VALVE	44
6665-776-8820	CABINET	211
6665-777-6599	CABINET ASSEMBLY	209
6150-081-6742	CABLE ASSEMBLY, POWER, ELECTRICAL	157
6665-779-5931	CALIBRATOR ASSEMBLY	121
6665-779-5922	CAM, PUMP	169

## ALPHABETICAL INDEX (cont'd)

FEDERAL STOCK NUMBER	DESCRIPTION	INDEX NO.
6665-779-9120	CAP, BALANCED ORIFICE	161
6665-778-7121	CAP, FILTER	45, 170
5910-984-2274	CAPACITOR, FIXED, MICA DIELECTRIC	3
5910-112-7524	CAPACITOR, FIXED, PAPER DIELECTRIC 100, 000 UUF	46
5910-811-5517	CAPACITOR, FIXED, PAPER DIELECTRIC 2 UUF	4
6665-778-6003	CHASSIS ASSEMBLY	33
6665-779-5928	CHASSIS ASSEMBLY, ELECTRIC	2
4730-585-8621	CLAMP, HOSE	251
6665-776-4388	CLIP	226
5940-666-4843	CLIP, ELECTRICAL, 5/16 in. lg	227
5940-258-6412	CLIP, ELECTRICAL, 19/32 in. lg	212
4820-812-9029	COCK, PLUG	125
6665-778-3485	COLLAR, TEST VALVE	47
6665-779-5933	COLLAR, WORM SHAFT	126
5935-807-7979	CONNECTOR, PLUG, ELECTRICAL, 4 contacts	48, 252
5935-170-8139	CONNECTOR, PLUG, ELECTRICAL, standard	158
5935-259-4229	CONNECTOR, PLUG, ELECTRICAL, universal	159
5935-644-6804	CONNECTOR, RECEPTACLE, ELECTRICAL, 2 contacts	49
5935-817-6463	CONNECTOR, RECEPTACLE, ELECTRICAL, 4 contacts	50

## ALPHABETICAL INDEX (cont'd)

FEDERAL STOCK NUMBER	DESCRIPTION	INDEX NO.
6665-776-4387	COVER	228
6665-775-8936	COVER, PANEL ASSEMBLY	225
6665-792-2538	COVER, SWITCH	253
4730-810-9804	CROSS, PIPE	127
6665-070-5553	CUP	295
4730-784-6783	CUP, OIL	171
6665-778-9590	CYLINDER, PUMP	172
6665-085-8945	DIAGRAM, VACUUM	231
6665-085-8944	DIAGRAM, WIRING	213
6665-779-5940	DIAPHRAGM	128
6665-085-8908	DISK, MOTOR, MOUNT	173
4730-277-5552	ELBOW, PIPE	51, 129, 174
4730-842-3524	ELBOW, PIPE TO HOSE	175
4730-822-6801	ELBOW, PIPE TO TUBE, 1/4 in. -18 thd size	53
4730-810-9803	ELBOW, PIPE TO TUBE, 1/4 in. -24 thd size	52, 130
5960-228-3765	ELECTRON TUBE, glass envelope, triode amplifier	5
6665-778-3482	FILTER, ORIFICE	54, 176
6665-784-0001	FLANGE, FILTER MOUNTING	55, 177
6665-784-0002	FLANGE, TEST VALVE	56

## ALPHABETICAL INDEX (cont'd)

FEDERAL STOCK NUMBER	DESCRIPTION	INDEX NO.
5920-280-8348	FUSE	57
5920-581-7213	FUSE HOLDER	58
6685-624-3667	GAGE, PRESSURE, DIAL INDICATING	59
5325-753-3959	GROMMET, RUBBER, 3/16 in. dia hole	60
5325-281-6594	GROMMET, RUBBER, 7/32 in. dia hole	131
5325-801-3103	GROMMET, RUBBER, 1/2 in. dia hole	6, 61
6665-776-4386	HANDLE, COVER	229
	HANDLE, PANEL	62
6665-970-0001	HANDLE, PANEL	214
	HANDLE, VALVE	178
6665-779-5930	HOLDER, BALANCED ORIFICE	160
6665-778-7118	HOLDER, FILTER	63
6665-778-7119	HOUSING, BLEEDER	64
6665-784-1598	HOUSING, BLOWER	179
6665-779-5932	HOUSING, CALIBRATOR	132
6665-778-3487	HOUSING, ORIFICE	65
6665-738-2128	INDICATOR, OUTLET VALVE LEAKAGE, M4A1	1
4450-396-0296	IMPELLER	180
5970-836-2246	INSULATION SLEEVING, ELECTRICAL, .204 in. id	254
5970-067-7635	INSULATION SLEEVING, ELECTRICAL, 7/8 in. id	255

## ALPHABETICAL INDEX (cont'd)

FEDERAL STOCK NUMBER	DESCRIPTION	INDEX NO.
5970-184-2002	INSULATION TAPE, ELECTRICAL	256
6665-779-5937	INSULATOR, CONTACTOR	133
5355-808-0067	KNOB	66
6240-143-3049	LAMP, INCANDESCENT	67
6210-814-4124	LIGHT, INDICATOR, 5/8 in. dia lens, red	68
6210-081-0831	LIGHT, INDICATOR, 1 in. dia, green	69
6210-754-8312	LIGHT, INDICATOR, 1 in. dia, red	70
6665-780-0583	LOCK, SHAFT	71
6665-776-4390	MANOMETER, WATER	232
6105-974-1236	MOTOR, UNIVERSAL	181
6665-779-5926	MOTOR AND PUMP ASSEMBLY	163
6665-778-3486	NAME PLATE	72
6665-779-5941	NEEDLE ASSEMBLY	134
4730-278-3758	NIPPLE, PIPE	73, 135
6665-780-0585	NUT, BLEEDER LOCK	74
5310-013-4524	NUT, PLAIN, HEXAGON, No. 4-40 NC-2B	215, 233
5310-013-4530	NUT, PLAIN, HEXAGON, No. 6-32 NC-2B	7, 75, 216, 234
5310-012-0622	NUT, PLAIN, HEXAGON, No. 8-32 NC-2B	76, 182, 206
5310-012-0361	NUT, PLAIN, HEXAGON, No. 10-24 NC-2B	77
5310-800-5282	NUT, PLAIN, HEXAGON, 1/4 in. -20 UNC-2B	183



## ALPHABETICAL INDEX (cont'd)

FEDERAL STOCK NUMBER	DESCRIPTION	INDEX NO.
5310-081-8087	NUT, SELF-LOCKING, HEXAGON, No. 6-32 UNC-3B	8, 78
4730-541-6188	NUT, TUBE COUPLING, 7/16 in. -20 UNF-2B	79
6665-808-8830	ORIFICE, pyrex, size 1	235, 272
6665-808-8831	ORIFICE, pyrex, size 2	273
6665-808-8832	ORIFICE, pyrex, size 3	236, 274
6665-808-8836	ORIFICE, pyrex, size 7	275
6665-809-0466	ORIFICE, pyrex, size 14	276
6665-809-0467	ORIFICE, pyrex, size 15	277
6665-809-0468	ORIFICE, pyrex, size 16	278
6665-474-7261	ORIFICE, pyrex, size 17	279
6665-076-6992	ORIFICE, pyrex, size 18	280
6665-076-6991	ORIFICE, pyrex, size 19	281
6665-076-6990	ORIFICE, pyrex, size 20	282
6665-076-6989	ORIFICE, pyrex, size 21	283
6665-778-3483	PANEL	80
5315-808-7283	PIN, GROOVED, HEADLESS, 3/8 in. lg	136
6665-778-9592	PISTON, PUMP	184
4710-809-8149	PLASTIC TUBING, 0.250 in. od	185
6665-784-1597	PLATE, BLOWER MOUNTING	186
6665-779-5939	PLATE, CALIBRATOR	137

## ALPHABETICAL INDEX (cont'd)

FEDERAL STOCK NUMBER	DESCRIPTION	INDEX NO.
5940-753-5151	PLATE, DESIGNATION	9
6665-775-8931	PLATE, MANOMETER MTG	237
6665-784-9220	PLUNGER, TEST VALVE	296
6665-798-3442	PLUNGER, TEST VALVE	61
6665-798-3438	PLUNGER, TEST VALVE ASSEMBLY	284
6665-792-2534	PROBE ASSEMBLY	246
5945-801-6529	RELAY, ARMATURE, 4 terminals for contacts	10
5945-069-6545	RELAY, ARMATURE, 6 terminals for contacts	11
5905-279-1754	RESISTOR, FIXED, COMPOSITION, 1.5 meg	13
5905-815-4765	RESISTOR, FIXED, COMPOSITION, 1/2 w	12
5905-186-3008	RESISTOR, FIXED, COMPOSITION, 100 OHMS 1/2 w	14
5905-810-3979	RESISTOR, FIXED, WIRE WOUND, 150 OHMS, 5w	82
5330-799-6445	RETAINER	297
5340-200-2637	RING, RETAINING	138
5320-165-8793	RIVET, SOLID, 3/16 in. lg	257
6665-811-4740	ROD, ALUMINUM	15
6665-775-8934	SCALE, MANOMETER	238
6665-779-5921	SCREW, BLEEDER ADJUST	83
5305-983-6652	SCREW, CAP, No. 10-32 NF-3A, 3/4 in. lg	217
5305-012-5622	SCREW, DRIVE, 0.073 in. size, 3/16 in. lg	84
5305-253-5623	SCREW, DRIVE, No. 8 screw size, 1/2 in. lg	85

## ALPHABETICAL INDEX (cont'd)

FEDERAL STOCK NUMBER	DESCRIPTION	INDEX NO.
5305-059-4553	SCREW, MACHINE, countersunk hd, No. 6-32 NC-2A, 1/2 in. lg	96
5305-010-1014	SCREW, MACHINE, flat countersunk hd, No. 6-32 NC-2A, 7/8 in. lg	260
5305-043-6700	SCREW, MACHINE, No. 8-32 NC, 1-1/4 in. lg	21
5305-043-6637	SCREW, MACHINE, pan hd, No. 4-40 NC-2A, 3/16 in. lg	239, 259
5305-043-6638	SCREW, MACHINE, pan hd, No. 4-40 NC-2A, 1/4 in. lg	218
5305-043-6639	SCREW, MACHINE, pan hd, No. 4-40 NC-2A, 5/16 in. lg	86, 139, 187
5305-043-6640	SCREW, MACHINE, pan hd, No. 4-40 NC-2A, 3/8 in. lg	230
5305-043-6642	SCREW, MACHINE, pan hd, No. 4-40 NC-2A, 1/2 in. lg	87
5305-019-3257	SCREW, MACHINE, pan hd, No. 6-32 UNC-2A, 1/4 in. lg	188, 219
5305-043-5885	SCREW, MACHINE, pan hd, No. 6-32 UNC-2A, 5/16 in. lg	16, 140, 240
5305-043-6663	SCREW, MACHINE, pan hd, No. 6-32 UNC-2A, 3/8 in. lg	88
5305-043-6665	SCREW, MACHINE, pan hd, No. 6-32 UNC-2A, 1/2 in. lg	89
5305-043-6666	SCREW, MACHINE, pan hd, No. 6-32 UNC-2A, 5/8 in. lg	17, 189
5305-639-4629	SCREW, MACHINE, pan hd, No. 6-32 NC-2A, 1 in. lg	90
5305-043-6671	SCREW, MACHINE, pan hd, No. 6-32 UNC-2A, 1-1/2 in. lg	18

## ALPHABETICAL INDEX (cont'd)

FEDERAL STOCK NUMBER	DESCRIPTION	INDEX NO.
5305-043-6690	SCREW, MACHINE, pan hd, No. 8-32 UNC-2A, 3/16 in. lg	19
5305-043-6693	SCREW, MACHINE, , pan hd, No. 8-32 NC-2A, 3/8 in. lg	91, 207, 220
5305-043-6694	SCREW, MACHINE, pan hd, No. 8-32 UNC-2A, 7/16 in. lg	141
5305-043-6695	SCREW; MACHINE, pan hd, No. 8-32 UNC-2A, 1/2 in. lg	20
5305-043-6696	SCREW, MACHINE, pan hd, No. 8-32 UNC-2A, 5/8 in. lg	92
5305-043-6697	SCREW, MACHINE, pan hd, No. 8-32 UNC-2A, 3/4 in. lg	142
5305-043-6728	SCREW, MACHINE, pan hd, No. 10-24 UNC-2A, 1/4 in. lg	190
5305-043-6730	SCREW, MACHINE, pan hd, No. 10-24 UNC-2A, 3/8 in. lg	93
5305-043-6748	SCREW, MACHINE, pan hd, No. 10-32 UNF-2A, 3/8 in. lg	143
5305-043-6732	SCREW, MACHINE, pan hd, No. 10-24 UNC-2A, 1/2 in. lg	94
5305-043-6750	SCREW, MACHINE, pan hd, No. 10-32 UNF-2A, 1/2 in. lg	95
5305-558-3679	SCREW, MACHINE, pan hd, 1/4 in. -20 NC-2A, 1 in. lg	191
6665-778-9587	SCREW, MASK TIP	261
6665-778-9588	SCREW, MASK TIP	262
6665-778-9586	SCREW ASSEMBLY	258

## ALPHABETICAL INDEX (cont'd)

FEDERAL STOCK NUMBER	DESCRIPTION	INDEX NO.
5305-249-0527	SETSCREW, No. 8-32 NC-3A, 3/16 in. lg	144
5305-818-4991	SETSCREW, No. 8-32 NC-3, 5/16 in. lg	97
5305-249-0526	SETSCREW, No. 8-32 NC-3A, 3/8 in. lg	145
5305-811-2061	SETSCREW, No. 8-32 NC-3, 1/2 in. lg	192
5305-682-5989	SETSCREW, No. 10-32 NF-3, 5/16 in. lg	98
6665-784-0003	SHAFT, STOP	146
6665-779-5935	SHAFT, WORM	147
6665-780-0584	SLEEVE	99
5935-232-3786	SOCKET, ELECTRON TUBE	22
6665-778-3480	SPACER	101
6665-778-9589	SPACER	23
6665-778-9593	SPACER, BLOWER HOUSING	193
6665-775-8933	SPRING	241
6665-776-8822	SPRING, BRACKET	221
6665-833-1219	SPRING, HELICAL COMPRESSION, 4 coils	102
6665-815-6107	SPRING, HELICAL, COMPRESSION, 9 coils	148
6665-776-4393	SPRING, TRIGGER	263
6640-441-0000	STOPPER, RUBBER	194
5340-291-3679	STRAP, RETAINING	242
6665-777-1053	SWITCH	103
5930-063-7257	SWITCH, DPDT	24

## ALPHABETICAL INDEX (cont'd)

FEDERAL STOCK NUMBER	DESCRIPTION	INDEX NO.
5930-265-6296	SWITCH, PUSH	104
5930-756-0271	SWITCH, ROTARY	105
5930-975-6967	SWITCH, SENSITIVE	264
5930-198-3938	SWITCH, TOGGLE, SPST	106
4730-820-1556	TEE, PIPE	107
5940-283-8478	TERMINAL, LUG, for No. 6 screw	149
5940-155-7685	TERMINAL, LUG, for No. 10 screw	150
5940-271-4622	TERMINAL BOARD, 1 terminal, 11/16 in. lg	25
5940-983-6045	TERMINAL BOARD, 4 terminals, 2-1/8 in. lg	108
5940-983-6047	TERMINAL BOARD, 6 terminals, 2-7/8 in. lg	109
5940-983-6057	TERMINAL BOARD, 16 terminals, barrier type, 6-5/8 in. lg	26
5940-682-2776	TERMINAL BOARD, 16 terminals, spade lug type, 6-5/8 in. lg	27
6645-078-4142	TIMER, INTERVAL	28
6645-078-4143	TIMER, INTERVAL	29
6665-792-2539	TIP, MASK TESTING	265
6665-792-2540	TIP, MASK TESTING	266
6665-732-3394	TIP, TESTING	298
5950-811-5557	TRANSFORMER, POWER, STEP-DOWN	110
5950-817-5134	TRANSFORMER, POWER, STEP-DOWN AND STEP-UP	30
6665-776-4392	TRIGGER, TEST PROBE	267

## ALPHABETICAL INDEX (cont'd)

FEDERAL STOCK NUMBER	DESCRIPTION	INDEX NO.
4710-277-5525	TUBE, COPPER, 1/4 in. od, 0.035 in. wall thk	111, 151
4710-277-5526	TUBE, COPPER, 5/16 in. od, 0.035 in. wall thk	195
4720-809-3191	TUBE, RUBBER, 1/8 in. id, 1/8 in. wall thk	243
4720-849-3206	TUBE, RUBBER, 1/8 in. id, 1/8 in. wall thk	112
4720-244-7786	TUBE, RUBBER, amber, 3/16 in. id, 3/8 in. od	113
4720-244-7789	TUBE, RUBBER, amber, 1/4 in. id, 3/32 in. wall thk	114, 196
4720-826-8598	TUBING, RUBBER, 1/4 in. id, 1/8 in. wall thk	268
4720-235-1781	TUBE, RUBBER, 1/4 in. id, 1/8 in. wall thk	197
4720-068-4249	TUBE, RUBBER, 11/32 in. od, 3/32 in. wall thk	162
4810-632-4888	VALVE, SOLENOID	115
4810-777-6601	VALVE, SOLENOID	116
6665-970-0002	VALVE AND BLOWER ADAPTER	198
6665-784-9221	VALVE ASSEMBLY	204
5310-632-6721	WASHER, FLAT, No. 4 screw size	153
5310-198-9348	WASHER, FLAT, No. 8 screw size	152
5310-809-3078	WASHER, FLAT, 1/4 in. bolt size	199
5310-209-5311	WASHER, LOCK, No. 4 screw size	118, 154, 201, 222, 244, 269
5310-045-0591	WASHER, LOCK, No. 6 screw size	31, 119, 202, 223, 245

## ALPHABETICAL INDEX (cont'd)

FEDERAL STOCK NUMBER	DESCRIPTION	INDEX NO.
5310-209-5309	WASHER, LOCK, No. 8 screw size	32, 120, 155, 208, 224
5310-043-2226	WASHER, LOCK, No. 10 screw size	117
5330-618-7768	WASHER, NONMETALLIC, 13/64 in. id	203
6145-548-2966	WIRE, ELECTRICAL, No. 18 AWG, color coded black	301
6145-836-5654	WIRE, ELECTRICAL, No. 18 AWG, color coded black w/red tracer	302
6145-548-2975	WIRE, ELECTRICAL, No. 18 AWG, color coded blue	303
6145-548-2965	WIRE, ELECTRICAL, No. 18 AWG, color coded brown	304
6145-548-2962	WIRE, ELECTRICAL, No. 18 AWG, color coded green	305
6145-754-8124	WIRE, ELECTRICAL, No. 18 AWG, color coded orange	306
6145-295-0820	WIRE, ELECTRICAL, No. 18 AWG, color coded red	307
6145-838-7829	WIRE, ELECTRICAL, No. 18 AWG, color coded white	308
6145-839-3166	WIRE, ELECTRICAL, No. 18 AWG, color coded white w/orange and violet tracers	309
6145-548-1422	WIRE, ELECTRICAL, No. 18 AWG, color coded white w/orange tracer	310
6145-834-1304	WIRE, ELECTRICAL, No. 18 AWG, color coded white w/red tracer	311



## ALPHABETICAL INDEX (cont'd)

FEDERAL STOCK NUMBER	DESCRIPTION	INDEX NO.
6145-295-0836	WIRE, ELECTRICAL, No. 18 AWG, color coded yellow	312
6665-779-5934	WORM	156

FEDERAL STOCK NUMBER INDEX			
FEDERAL STOCK NUMBER	INDEX NUMBER	FEDERAL STOCK NUMBER	INDEX NUMBER
4450-396-0296	180	4730-822-6801	53
4710-277-5525	111, 151	4730-842-3524	175
4710-277-5526	195	4810-632-4888	115
4710-809-8149	185	4810-777-6601	116
4720-068-4249	162	4820-812-9029	125
4720-235-1781	197	5305-010-1014	260
4720-244-7789	114, 196	5305-012-5622	84
4720-809-3191	243		
4720-826-8598	268	5305-019-3257	188, 219
4730-011-2877	168	5305-043-5885	16, 140, 240
4730-011-9928	205	5305-043-6637	239, 259
4730-277-5552	51, 129, 174	5305-043-6638	218
4730-278-3758	73, 135	5305-043-6639	86, 139, 187
4730-541-6188	79	5305-043-6640	230
4730-554-7792	34, 164, 247	5305-043-6642	87
4730-585-8621	251	5305-043-6663	88
4730-618-0509	35, 122	5305-043-6665	89
4730-784-6783	171	5305-043-6666	17, 189
4730-810-9803	52, 130	5305-043-6671	18
4730-810-9804	127	5305-043-6690	19
4730-820-1556	107	5305-043-6693	91, 207, 220

FEDERAL STOCK NUMBER INDEX (cont'd)			
FEDERAL STOCK NUMBER	INDEX NUMBER	FEDERAL STOCK NUMBER	INDEX NUMBER
5305-043-6694	141	5310-013-4524	215, 233
5305-043-6695	20	5310-013-4530	7, 75, 216, 234
5305-043-6696	92	5310-043-2226	117
5305-043-6697	142	5310-045-0591	31, 119, 202, 223, 245
5305-043-6700	21	5310-081-8087	8, 78
5305-043-6728	190	5310-198-9348	152
5305-043-6730	93	5310-209-5309	32, 120, 155, 208 224
5305-043-6732	94	5310-209-5311	118, 154, 201, 222
5305-043-6748	143		244, 269
5305-043-6750	95	5310-632-6721	153
5305-059-4553	96		
5305-249-0526	145	5310-800-5282	183
5305-249-0527	144	5310-809-3078	199
5305-253-5623	85	5315-808-7283	136
5305-558-3679	191	5325-281-6594	131
5305-639-4629	90	5325-753- 3959	60
5305-682-5989	98	5325-801-3103	6, 61
5305-811-2061	192	5330-618-7768	203
5305-818-4991	97	5330-799-6445	297
5305-983-6652	217	5340-200-2637	138
5310-012-0361	77	5340-291-3679	242
5310-012-0622	76, 182, 206	5355-808-0067	66

FEDERAL STOCK, NUMBER INDEX (cont'd)			
FEDERAL STOCK NUMBER	INDEX NUMBER	FEDERAL STOCK NUMBER	INDEX NUMBER
5895-323-9921	39	5940-258-6412	212
5905-186-3008	14	5940-271-4622	25
5905-279-1754	13	5940-283-8478	149
5905-810-3979	82	5940-666-4843	227
5905-815-4765	12	5940-682-2776	27
5910-112-7524	46	5940-753-5151	9
5910-811-5517	4	5940-983-6045	108
5910-984-2274	3	5940-983-6047	109
5920-280-8348	57	5940-983-6057	26
5920-581-7213	58	5945-069-6545	11
5930-063-7257	24	5945-784-7903	28
5930-198-3938	106	5945-801-6529	10
5930-265-6296	104	5950-811-5557	110
5930-756-0271	105	5950-817-5134	30
5935-170-8139	158	5960-228-3765	5
5935-232-3786	22	5970-184-2002	256
5935-259-4229	159	5977-730-7070	166
5935-644-6804	49	5977-843-6359	167
5935-807-7979	48, 252	6105-974-1236	181
5935-817-6463	50	6145-295-0820	307
5940-155-7685	150	6145-295-0836	312

FEDERAL STOCK NUMBER INDEX (cont'd)			
FEDERAL STOCK NUMBER	INDEX NUMBER	FEDERAL STOCK NUMBER	INDEX NUMBER
6145-548-1422	310	6665-070-5553	295
6145-548-2962	305	6665-070-5554	286
6145-548-2965	304	6665-070-5555	291
6145-548-2966	301	6665-070-5556	292
6145-548-2975	303	6665-076-6989	283
6145-754-8124	306	6665-076-6990	282
6145-834-1304	311	6665-076-6991	281
6145-836-5654	302	6665-076-6992	280
6145-838-7829	308	6665-085-8908	173
6145-839-3166	309	6665-085-8944	213
6150-081-6742	157	6665-474-7261	279
6210-081-0831	69	6665-732-3394	298
6210-754-8312	70	6665-736-3229	271
6210-814-4124	68	6665-738-2128	1
6240-143-3049	67	6665-775-8931	237
6350-284-1357	37	6665-775-8933	241
6640-441-0000	194	6665-775-8934	238
6645-171-9636	29	6665-775-8936	225
6665-070-5549	294	6665-776-4386	229
6665-070-5550	293	6665-776-4387	228
6665-070-5551	285	6665-776-4388	226

FEDERAL STOCK NUMBER INDEX (cont'd)			
FEDERAL STOCK NUMBER	INDEX NUMBER	FEDERAL STOCK NUMBER	INDEX NUMBER
6665-776-4390	232	6665-778-9586	258
6665-776-4392	267	6665-778-9587	261
6665-776-4393	263	6665-778-9588	262
6665-776-4394	210	6665-778-9589	23
6665-776-8820	211	6665-778-9590	172
6665-776-8822	221	6665-778-9591	165
6665-777-1053	103	6665-778-9592	184
6665-777-6599	209	6665-778-9593	193
6665-778-3480	101	6665-779-5921	83
6665-778-3481	43	6665-779-5922	169
6665-778-3482	54, 176	6665-779-5926	163
6665-778-3483	80	6665-779-5928	2
6665-778-3484	44	6665-779-5930	160
6665-778-3485	47	6665-779-5931	121
6665-778-3486	72	6665-779-5932	132
6665-778-3487	65	6665-779-5933	126
6665-778-6003	33	6665-779-5934	156
6665-778-7117	36, 248	6665-779-5935	147
6665-778-7118	63	6665-779-5937	133
6665-778-7119	64	6665-779-5938	124
6665-778-7121	45, 170	6665-779-5939	137

FEDERAL STOCK NUMBER INDEX (cont'd)			
FEDERAL STOCK NUMBER	INDEX NUMBER	FEDERAL STOCK NUMBER	INDEX NUMBER
6665-779-5940	128	6665-798-3441	287
6665-779-5941	134	6665-798-3442	81
6665-779-9120	161	6665-798-8832	288
6665-780-0583	71	6665-798-8833	289
6665-780-0584	99	6665-798-8834	290
6665-780-0585	74	6665-808-8830	235, 272
6665-784-0001	55, 177	6665-808-8831	273
6665-784-0002	56	6665-808-8832	236, 274
6665-784-0003	146	6665-808-8836	275
6665-784-1597	186	6665-809-0466	276
6665-784-1598	179	6665-809-0467	277
6665-784-1602	270	6665-809-0468	278
6665-784-9220	296	6665-811-4740	15
6665-784-9221	204	6665-815-6107	148
6665-792-2534	246	6665-833-1219	102
6665-792-2535	249	6665-893-2659	38
6665-792-2536	250	6665-970-0001	214
6665-792-2538	253	6665-970-0002	198
6665-792-2539	265	6685-624-3667	59
6665-792-2540	266	8040-275-1230	299
6665-798-3438	284		

By Order of the Secretary of the Army:

Official:

EARLE G. WHEELER,  
*General, United States Army,  
Chief of Staff.*

J. C. LAMBERT,  
*Major General, United States Army,  
The Adjutant General.*

Distribution:

*Active Army:*

CNGB (1)  
USA Maint Ed (2)  
USACBRCCA (2)  
USAADCDA (2)  
USAARMCDA (2)  
USAARTYCDA (2)  
USAAVNCCA (2)  
USAICDA (2)  
USASWCDA (2)  
USA Armor Cen (2)  
USA Arty Cen (2)  
USA Engr Cen (2)  
USA GM Cen (2)  
USAIC (2)  
USCONARC (10)  
ARADCOM (5)  
ARADCOM Rgn (5)  
Armies (5)  
USMA (10)  
Svc Colleges (10)  
Br Svc Sch (10) except

USACMLSCH (50)  
GENDEP (OS), (5)  
Dep (OS) (5)  
A Dep (5)  
USASMCOM (1)  
USAMUCOM (5)  
USAMC (5)  
USAOSA (2)  
POE (1)  
Instl (2)  
USA Trans Tml Comd (1)  
Army Tml (1)  
Arsenals (3) except  
Edgewood (50)  
PG (5)  
USA Corps (1)  
Units org under fol TOE:  
3-47 (1)  
3-147 (1)  
3-500 (EA-EB) (1)

NG: State AG (3); Divisions (1).

USAR: None.

For explanation of abbreviations used, **see AR 320-50.**



TM 3-6665-209-35P INDICATOR, OUTLET VALVE LEAKAGE, M4A1-1964